

## Product datasheet for **TA383480**

### ZFP28 Rabbit Polyclonal Antibody

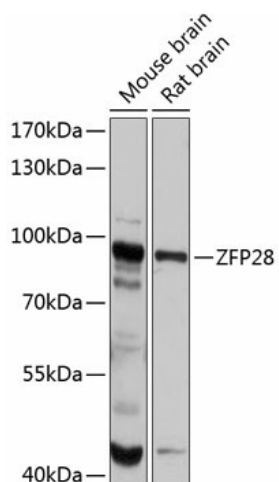
#### Product data:

Product Type:	Primary Antibodies
Applications:	WB
Recommended Dilution:	WB,1:500 - 1:2000
Reactivity:	Mouse, Rat
Modifications:	Unmodified
Host:	Rabbit
Isotype:	IgG
Clonality:	Polyclonal
Immunogen:	Recombinant fusion protein containing a sequence corresponding to amino acids 1-349 of human ZFP28 (NP_001295369.1).
Formulation:	Buffer: PBS with 0.02% sodium azide,50% glycerol,pH7.3.
Concentration:	lot specific
Purification:	Affinity purification
Conjugation:	Unconjugated
Storage:	Store at -20°C. Avoid freeze / thaw cycles.
Stability:	Shelf life: one year from despatch.
Predicted Protein Size:	38kDa/98kDa
Gene Name:	ZFP28 zinc finger protein
Database Link:	<a href="#">Q8NHY6</a>
Background:	May be involved in transcriptional regulation. May have a role in embryonic development.
Synonyms:	DKFZp686K03205; KIAA1431; MGC104540; mkr5; Zfp-28



[View online »](#)

## Product images:



Western blot analysis of extracts of various cell lines, using ZFP28 antibody (TA383480) at 1:1000 dilution. | Secondary antibody: HRP Goat Anti-Rabbit IgG (H+L) at 1:10000 dilution. | Lysates/proteins: 25ug per lane. | Blocking buffer: 3% nonfat dry milk in TBST. | Detection: ECL Basic Kit . | Exposure time: 10s.