

Product datasheet for **TA383476**

AREB6 (ZEB1) Rabbit Polyclonal Antibody

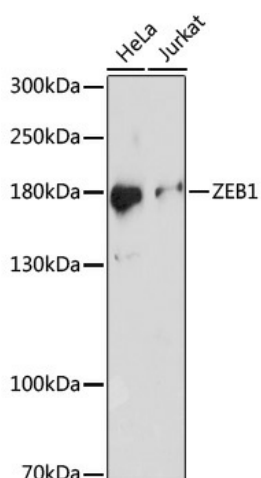
Product data:

Product Type:	Primary Antibodies
Applications:	ICC/IF, IHC, WB
Recommended Dilution:	WB,1:500 - 1:2000 IHC,1:50 - 1:200 IF,1:50 - 1:200
Reactivity:	Human, Mouse, Rat
Host:	Rabbit
Isotype:	IgG
Clonality:	Polyclonal
Immunogen:	A synthetic peptide of human ZEB1.
Formulation:	Buffer: PBS with 0.02% sodium azide,50% glycerol,pH7.3.
Concentration:	lot specific
Purification:	Affinity purification
Conjugation:	Unconjugated
Storage:	Store at -20°C. Avoid freeze / thaw cycles.
Stability:	Shelf life: one year from despatch.
Predicted Protein Size:	116kDa/122kDa/124kDa
Gene Name:	zinc finger E-box binding homeobox 1
Database Link:	Entrez Gene 6935 Human P37275
Background:	This gene encodes a zinc finger transcription factor. The encoded protein likely plays a role in transcriptional repression of interleukin 2. Mutations in this gene have been associated with posterior polymorphous corneal dystrophy-3 and late-onset Fuchs endothelial corneal dystrophy. Alternatively spliced transcript variants encoding different isoforms have been described.
Synonyms:	AREB6; BZP; DELTA-EF1; MGC133261; NIL-2-A; NIL-2A; NIL2A; TCF8; ZEB; ZFHEP; ZFH1A

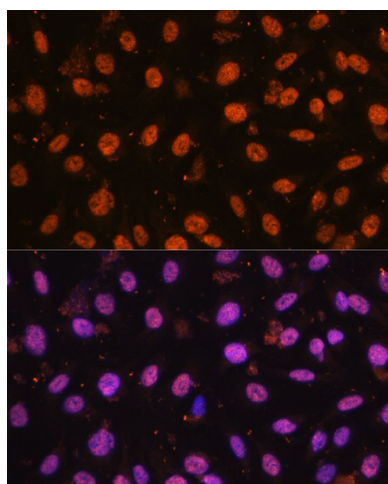


[View online »](#)

Product images:



Western blot analysis of extracts of various cells, using ZEB1 antibody (TA383476) at 1:1000 dilution. | Secondary antibody: HRP Goat Anti-Rabbit IgG (H+L) at 1:10000 dilution. | Lysates/proteins: 25ug per lane. | Blocking buffer: 3% nonfat dry milk in TBST. | Detection: ECL Basic Kit. | Exposure time: 5min.



Immunofluorescence analysis of U2OS cells using ZEB1 antibody (TA383476) at dilution of 1:100. Blue: DAPI for nuclear staining.