

Product datasheet for **TA383472**

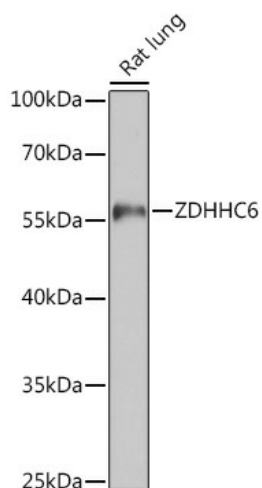
ZDHHC6 Rabbit Polyclonal Antibody

Product data:

Product Type:	Primary Antibodies
Applications:	WB
Recommended Dilution:	WB,1:500 - 1:2000
Reactivity:	Human, Mouse, Rat
Host:	Rabbit
Isotype:	IgG
Clonality:	Polyclonal
Immunogen:	Recombinant protein of human ZDHHC6.
Formulation:	Buffer: PBS with 0.02% sodium azide,50% glycerol,pH7.3.
Concentration:	lot specific
Purification:	Affinity purification
Conjugation:	Unconjugated
Storage:	Store at -20°C. Avoid freeze / thaw cycles.
Stability:	Shelf life: one year from despatch.
Gene Name:	zinc finger DHHC-type containing 6
Database Link:	Entrez Gene 64429 Human Q9H6R6
Background:	Endoplasmic reticulum palmitoyl acyltransferase that mediates palmitoylation of proteins such as AMFR, CALX, ITPR1 and TFRC. Palmitoylates calnexin (CALX, which is required for its association with the ribosome-translocon complex and efficient folding of glycosylated proteins. Mediates palmitoylation of AMFR, promoting AMFR distribution to the peripheral endoplasmic reticulum. Together with SELENOK, palmitoylates ITPR1 in immune cells, leading to regulate ITPR1 stability and function. Stearoyltransferase that mediates stearoylation of TFRC to inhibit TFRC-mediated activation of the JNK pathway and mitochondrial fragmentation.
Synonyms:	DHHC-6; FLJ21952; ZNF376



[View online »](#)

Product images:

Western blot analysis of extracts of Rat lung, using ZDHHC6 antibody (TA383472) at 1:1000 dilution. | Secondary antibody: HRP Goat Anti-Rabbit IgG (H+L) at 1:10000 dilution. | Lysates/proteins: 25ug per lane. | Blocking buffer: 3% nonfat dry milk in TBST. | Detection: ECL Basic Kit . | Exposure time: 90s.