

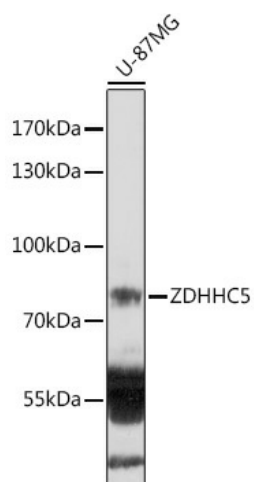
Product datasheet for **TA383471S**

ZDHHC5 Rabbit Polyclonal Antibody

Product data:

Product Type:	Primary Antibodies
Applications:	ELISA, WB
Recommended Dilution:	WB, 1:500 - 1:2000 ELISA, Recommended starting concentration is 1 µg/mL. Please optimize the concentration based on your specific assay requirements.
Reactivity:	Human, Mouse
Host:	Rabbit
Isotype:	IgG
Clonality:	Polyclonal
Formulation:	Buffer: PBS with 0.02% sodium azide, 50% glycerol, pH 7.3.
Concentration:	lot specific
Purification:	Affinity purification
Conjugation:	Unconjugated
Storage:	Store at -20°C. Avoid freeze / thaw cycles.
Stability:	Shelf life: one year from despatch.
Predicted Protein Size:	78kDa
Gene Name:	zinc finger DHHC-type containing 5
Database Link:	Entrez Gene 25921 Human Q9C0B5
Background:	Enables palmitoyltransferase activity. Involved in positive regulation of pattern recognition receptor signaling pathway and positive regulation of protein localization to plasma membrane. Acts upstream of or within protein palmitoylation. Located in phagocytic vesicle and plasma membrane.
Synonyms:	DHHC-5; DKFZp586K0524; KIAA1748; ZNF375

[View online »](#)

Product images:


Western blot analysis of lysates from U-87MG cells