

## Product datasheet for **TA383470S**

### **ZDHHC4 Rabbit Polyclonal Antibody**

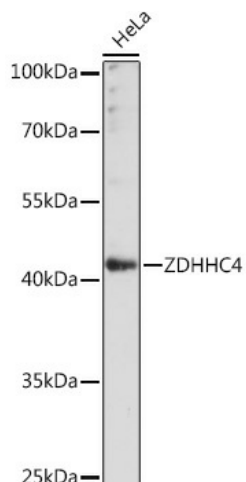
#### **Product data:**

Product Type:	Primary Antibodies
Applications:	ELISA, WB
Recommended Dilution:	WB, 1:500 - 1:2000 ELISA, Recommended starting concentration is 1 µg/mL. Please optimize the concentration based on your specific assay requirements.
Reactivity:	Human, Mouse, Rat
Host:	Rabbit
Isotype:	IgG
Clonality:	Polyclonal
Formulation:	Buffer: PBS with 0.02% sodium azide, 50% glycerol, pH 7.3.
Concentration:	lot specific
Purification:	Affinity purification
Conjugation:	Unconjugated
Storage:	Store at -20°C. Avoid freeze / thaw cycles.
Stability:	Shelf life: one year from despatch.
Predicted Protein Size:	40kDa
Gene Name:	zinc finger DHHC-type containing 4
Database Link:	<a href="#">Entrez Gene 55146 Human Q9NPG8</a>
Background:	Predicted to enable protein-cysteine S-palmitoyltransferase activity. Predicted to be involved in peptidyl-L-cysteine S-palmitoylation and protein targeting to membrane. Located in Golgi apparatus and endoplasmic reticulum.
Synonyms:	DHHC-4; FLJ10479; OTTHUMP00000115925; OTTHUMP00000115926; ZNF374

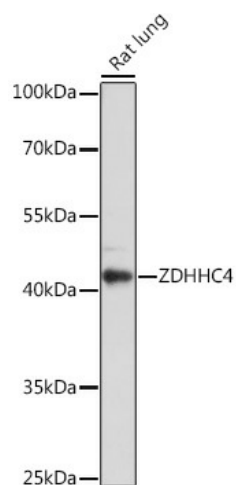


[View online »](#)

## Product images:



Western blot analysis of lysates from HeLa cells



Western blot analysis of lysates from Rat lung