

## Product datasheet for **TA383470**

### ZDHHC4 Rabbit Polyclonal Antibody

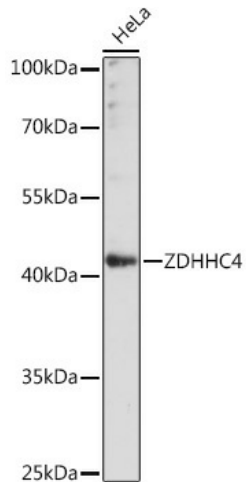
#### Product data:

Product Type:	Primary Antibodies
Applications:	WB
Recommended Dilution:	WB,1:500 - 1:2000
Reactivity:	Human, Mouse, Rat
Host:	Rabbit
Isotype:	IgG
Clonality:	Polyclonal
Immunogen:	Recombinant protein of human ZDHHC4.
Formulation:	Buffer: PBS with 0.02% sodium azide,50% glycerol,pH7.3.
Concentration:	lot specific
Purification:	Affinity purification
Conjugation:	Unconjugated
Storage:	Store at -20°C. Avoid freeze / thaw cycles.
Stability:	Shelf life: one year from despatch.
Gene Name:	zinc finger DHHC-type containing 4
Database Link:	<a href="#">Entrez Gene 55146 Human Q9NPG8</a>
Background:	Palmitoyltransferase that could catalyze the addition of palmitate onto protein substrates including the D(2 dopamine receptor DRD2.
Synonyms:	DHHC-4; FLJ10479; OTTHUMP00000115925; OTTHUMP00000115926; ZNF374

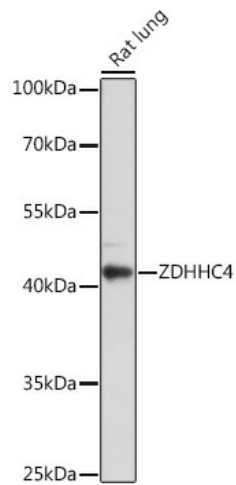


[View online »](#)

## Product images:



Western blot analysis of extracts of HeLa cells, using ZDHHC4 antibody (TA383470) at 1:1000 dilution. | Secondary antibody: HRP Goat Anti-Rabbit IgG (H+L) at 1:10000 dilution. | Lysates/proteins: 25ug per lane. | Blocking buffer: 3% nonfat dry milk in TBST. | Detection: ECL Basic Kit . | Exposure time: 60s.



Western blot analysis of extracts of Rat lung, using ZDHHC4 antibody (TA383470) at 1:1000 dilution. | Secondary antibody: HRP Goat Anti-Rabbit IgG (H+L) at 1:10000 dilution. | Lysates/proteins: 25ug per lane. | Blocking buffer: 3% nonfat dry milk in TBST. | Detection: ECL Basic Kit . | Exposure time: 3min.