

Product datasheet for **TA383469S**

ZDHHC20 Rabbit Polyclonal Antibody

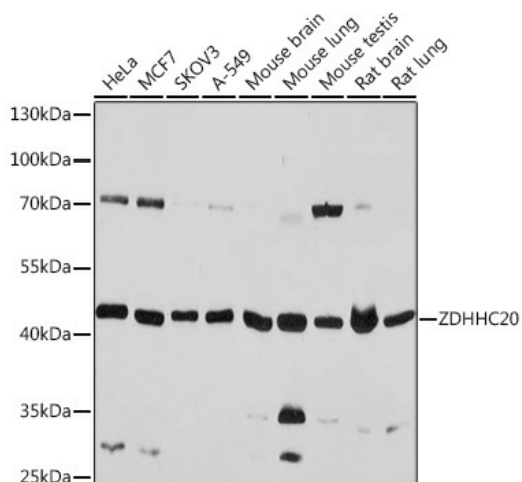
Product data:

Product Type:	Primary Antibodies
Applications:	ELISA, WB
Recommended Dilution:	WB, 1:500 - 1:2000 ELISA, Recommended starting concentration is 1 µg/mL. Please optimize the concentration based on your specific assay requirements.
Reactivity:	Human, Mouse, Rat
Host:	Rabbit
Isotype:	IgG
Clonality:	Polyclonal
Formulation:	Buffer: PBS with 0.02% sodium azide, 50% glycerol, pH 7.3.
Concentration:	lot specific
Purification:	Affinity purification
Conjugation:	Unconjugated
Storage:	Store at -20°C. Avoid freeze / thaw cycles.
Stability:	Shelf life: one year from despatch.
Predicted Protein Size:	42kDa
Gene Name:	zinc finger DHHC-type containing 20
Database Link:	Entrez Gene 253832 Human Q5W0Z9
Background:	Enables protein-cysteine S-palmitoyltransferase activity and zinc ion binding activity. Involved in peptidyl-L-cysteine S-palmitoylation. Located in intracellular membrane-bounded organelle and plasma membrane. Is integral component of Golgi membrane.
Synonyms:	4933421L13Rik; DHHC-20; FLJ25952; MGC126005



[View online »](#)

Product images:



Western blot analysis of various lysates using ZDHHC20 Rabbit pAb (TA383469S) at 1:1000 dilution.

Secondary antibody: HRP-conjugated Goat anti-Rabbit IgG (H+L) at 1:10000 dilution.

Lysates/proteins: 25µg per lane.

Blocking buffer: 3% nonfat dry milk in TBST.

Detection: ECL Basic Kit .

Exposure time: 3s.