

## Product datasheet for **TA383469**

### ZDHHC20 Rabbit Polyclonal Antibody

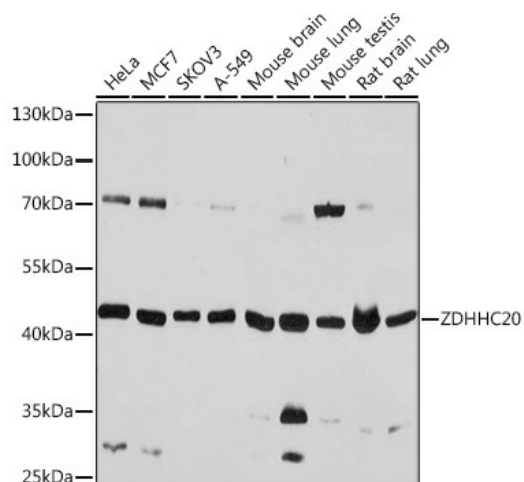
#### Product data:

|                       |   |
|-----------------------|---|
| Product Type:         | Primary Antibodies  |
| Applications:         | WB  |
| Recommended Dilution: | WB,1:500 - 1:2000   |
| Reactivity:           | Human, Mouse, Rat   |
| Host:                 | Rabbit  |
| Isotype:              | IgG   |
| Clonality:            | Polyclonal  |
| Immunogen:            | Recombinant protein of human ZDHHC20.   |
| Formulation:          | Buffer: PBS with 0.02% sodium azide,50% glycerol,pH7.3.   |
| Concentration:        | lot specific  |
| Purification:         | Affinity purification   |
| Conjugation:          | Unconjugated  |
| Storage:              | Store at -20°C. Avoid freeze / thaw cycles.   |
| Stability:            | Shelf life: one year from despatch.   |
| Gene Name:            | zinc finger DHHC-type containing 20   |
| Database Link:        | <a href="#">Entrez Gene 253832 Human Q5W0Z9</a>   |
| Background:           | Palmitoyltransferase that could catalyze the addition of palmitate onto various protein substrates. Catalyzes palmitoylation of Cys residues in the cytoplasmic C-terminus of EGFR, and modulates the duration of EGFR signaling by modulating palmitoylation-dependent EGFR internalization and degradation. Has a preference for acyl-CoA with C16 fatty acid chains. Can also utilize acyl-CoA with C14 and C18 fatty acid chains. |
| Synonyms:             | 4933421L13Rik; DHHC-20; FLJ25952; MGC126005   |



[View online »](#)

## Product images:



Western blot analysis of extracts of various cell lines, using ZDHHC20 antibody (TA383469) at 1:1000 dilution. | Secondary antibody: HRP Goat Anti-Rabbit IgG (H+L) at 1:10000 dilution. | Lysates/proteins: 25ug per lane. | Blocking buffer: 3% nonfat dry milk in TBST. | Detection: ECL Basic Kit . | Exposure time: 3s.