

Product datasheet for **TA383468S**

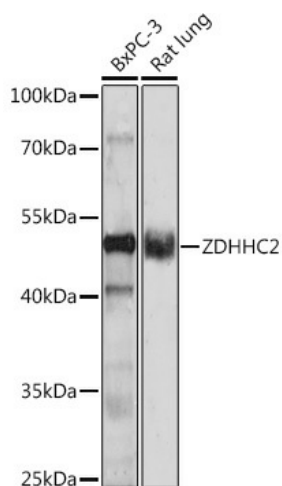
ZDHHC2 Rabbit Polyclonal Antibody

Product data:

Product Type:	Primary Antibodies
Applications:	ELISA, WB
Recommended Dilution:	WB, 1:500 - 1:2000 ELISA, Recommended starting concentration is 1 µg/mL. Please optimize the concentration based on your specific assay requirements.
Reactivity:	Human, Rat
Host:	Rabbit
Isotype:	IgG
Clonality:	Polyclonal
Formulation:	Buffer: PBS with 0.02% sodium azide, 50% glycerol, pH 7.3.
Concentration:	lot specific
Purification:	Affinity purification
Conjugation:	Unconjugated
Storage:	Store at -20°C. Avoid freeze / thaw cycles.
Stability:	Shelf life: one year from despatch.
Predicted Protein Size:	42kDa
Gene Name:	zinc finger DHHC-type containing 2
Database Link:	Entrez Gene 51201 Human Q9UIJ5
Background:	Enables protein homodimerization activity and protein-cysteine S-palmitoyltransferase activity. Involved in several processes, including peptidyl-L-cysteine S-palmitoylation; regulation of protein catabolic process; and regulation of protein localization to plasma membrane. Located in Golgi apparatus and endoplasmic reticulum membrane.
Synonyms:	DHHC-2; DHHC2; Ream; rec; ZNF372



[View online »](#)

Product images:


Western blot analysis of various lysates using ZDHHC2 Rabbit pAb ([TA383468]) at 1:1000 dilution.

Secondary antibody: HRP-conjugated Goat anti-Rabbit IgG (H+L) (AS014) at 1:10000 dilution.

Lysates/proteins: 25µg per lane.

Blocking buffer: 3% nonfat dry milk in TBST.

Detection: ECL Enhanced Kit (RM00021).

Exposure time: 90s.