

## Product datasheet for **TA383466S**

### ZDHHC17 Rabbit Polyclonal Antibody

#### Product data:

Product Type:	Primary Antibodies
Applications:	WB
Recommended Dilution:	WB,1:500 - 1:2000 IHC,1:50 - 1:200
Reactivity:	Human, Mouse, Rat
Modifications:	Unmodified
Host:	Rabbit
Isotype:	IgG
Clonality:	Polyclonal
Immunogen:	Recombinant fusion protein containing a sequence corresponding to amino acids 170-310 of human ZDHHC17 (NP_056151.2).
Formulation:	Buffer: PBS with 0.02% sodium azide,50% glycerol,pH7.3.
Concentration:	lot specific
Purification:	Affinity purification
Conjugation:	Unconjugated
Storage:	Store at -20°C. Avoid freeze / thaw cycles.
Stability:	Shelf life: one year from despatch.
Predicted Protein Size:	22kDa/23kDa/72kDa
Gene Name:	zinc finger DHHC-type containing 17
Database Link:	<a href="#">Entrez Gene 23390 Human Q8IUH5</a>



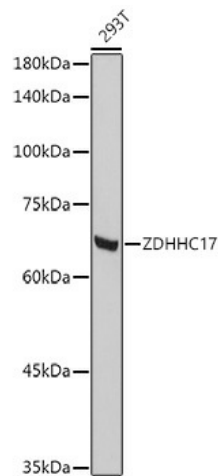
[View online »](#)

**Background:**

Palmitoyltransferase that catalyzes the addition of palmitate onto various protein substrates and is involved in a variety of cellular processes. Has no stringent fatty acid selectivity and in addition to palmitate can also transfer onto target proteins myristate from tetradecanoyl-CoA and stearate from octadecanoyl-CoA (By similarity). Palmitoyltransferase specific for a subset of neuronal proteins, including SNAP25, DLG4/PSD95, GAD2, SYT1 and HTT. Also palmitoylates neuronal protein GPM6A as well as SPRED1 and SPRED3. Could also play a role in axonogenesis through the regulation of NTRK1 and the downstream ERK1/ERK2 signaling cascade (By similarity). May be involved in the sorting or targeting of critical proteins involved in the initiating events of endocytosis at the plasma membrane. May play a role in Mg(2+ transport. Could also palmitoylate DNAJC5 and regulate its localization to the Golgi membrane (By similarity).

**Synonyms:**

DHHC-17; HIP3; HIP14; HSPC294; HYPH; KIAA0946

**Product images:**

Western blot analysis of extracts of 293T cells, using ZDHHC17 antibody ([TA383466]) at 1:1000 dilution. | Secondary antibody: HRP Goat Anti-Rabbit IgG (H+L) at 1:10000 dilution. | Lysates/proteins: 25ug per lane. | Blocking buffer: 3% nonfat dry milk in TBST. | Detection: ECL Basic Kit . | Exposure time: 10s.