

Product datasheet for **TA383463S**

ZCWPW1 Rabbit Polyclonal Antibody

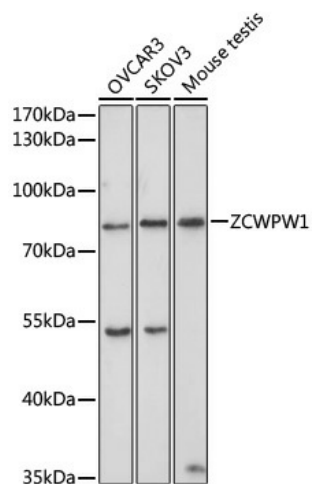
Product data:

Product Type:	Primary Antibodies
Applications:	WB
Recommended Dilution:	WB,1:500 - 1:2000
Reactivity:	Human, Mouse
Modifications:	Unmodified
Host:	Rabbit
Isotype:	IgG
Clonality:	Polyclonal
Immunogen:	Recombinant fusion protein containing a sequence corresponding to amino acids 389-648 of human ZCWPW1 (NP_060454.3).
Formulation:	Buffer: PBS with 0.02% sodium azide,50% glycerol,pH7.3.
Concentration:	lot specific
Purification:	Affinity purification
Conjugation:	Unconjugated
Storage:	Store at -20°C. Avoid freeze / thaw cycles.
Stability:	Shelf life: one year from despatch.
Predicted Protein Size:	45kDa/52kDa/53kDa/59kDa/72kDa
Gene Name:	zinc finger CW-type and PWWP domain containing 1
Database Link:	Entrez Gene 55063 Human Q9H0M4
Background:	Dual histone methylation reader specific for PRDM9-catalyzed histone marks (H3K4me3 and H3K36me3. Facilitates the repair of PRDM9-induced meiotic double-strand breaks (DSBs (By similarity. Essential for male fertility and spermatogenesis (By similarity. Required for meiosis prophase I progression in male but not in female germ cells (By similarity.
Synonyms:	DKFZp434N0510; FLJ10057; ZCW1



[View online »](#)

Product images:



Western blot analysis of extracts of various cell lines, using ZCWPW1 antibody ([TA383463]) at 1:1000 dilution. | Secondary antibody: HRP Goat Anti-Rabbit IgG (H+L) at 1:10000 dilution. | Lysates/proteins: 25ug per lane. | Blocking buffer: 3% nonfat dry milk in TBST. | Detection: ECL Basic Kit . | Exposure time: 30s.