

## Product datasheet for **TA383461**

### ZCCHC8 Rabbit Polyclonal Antibody

#### Product data:

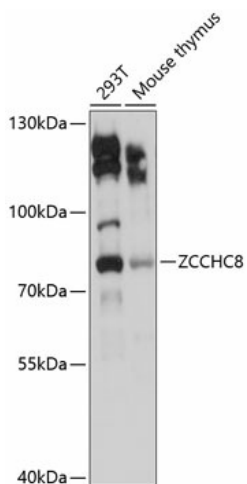
Product Type:	Primary Antibodies
Applications:	WB
Recommended Dilution:	WB,1:500 - 1:2000
Reactivity:	Human, Mouse
Modifications:	Unmodified
Host:	Rabbit
Isotype:	IgG
Clonality:	Polyclonal
Immunogen:	Recombinant fusion protein containing a sequence corresponding to amino acids 1-240 of human ZCCHC8 (NP_060082.2).
Formulation:	Buffer: PBS with 0.02% sodium azide,50% glycerol,pH7.3.
Concentration:	lot specific
Purification:	Affinity purification
Conjugation:	Unconjugated
Storage:	Store at -20°C. Avoid freeze / thaw cycles.
Stability:	Shelf life: one year from despatch.
Predicted Protein Size:	51kDa/78kDa
Gene Name:	zinc finger CCHC-type containing 8
Database Link:	<a href="#">Entrez Gene 55596 Human Q6NZY4</a>
Background:	This gene encodes a scaffold protein which serves as an assessor factor to the nuclear RNA exosome complex. The encoded protein forms a trimeric human nuclear exosome targeting (NEXT) complex, together with hMTR4 and the RNA-binding factor RBM7 which promotes the exosomal degradation of non-coding promoter-upstream transcripts, enhancer RNAs and 3'-extended products of histone- and small nuclear RNA transcription. This complex is also thought to recruit the exosome to degrade intronic RNAs via its interaction with both the exosome and the spliceosome. It contains both an N-terminal zinc-knuckle domain and a C-terminal proline-rich domain.



[View online »](#)

Synonyms: DKFZp434E2220

### Product images:



Western blot analysis of extracts of various cell lines, using ZCCHC8 antibody (TA383461) at 1:3000 dilution. | Secondary antibody: HRP Goat Anti-Rabbit IgG (H+L) at 1:10000 dilution. | Lysates/proteins: 25ug per lane. | Blocking buffer: 3% nonfat dry milk in TBST. | Detection: ECL Basic Kit . | Exposure time: 15s.