

## Product datasheet for **TA383459**

### ZCCHC4 Rabbit Polyclonal Antibody

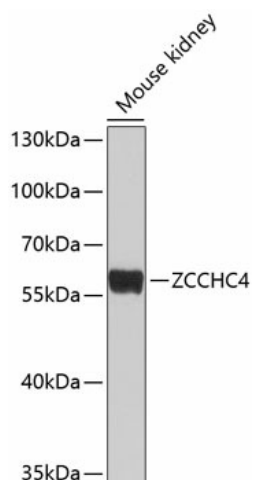
#### Product data:

Product Type:	Primary Antibodies
Applications:	WB
Recommended Dilution:	WB,1:500 - 1:2000
Reactivity:	Mouse
Modifications:	Unmodified
Host:	Rabbit
Isotype:	IgG
Clonality:	Polyclonal
Immunogen:	Recombinant fusion protein containing a sequence corresponding to amino acids 50-220 of human ZCCHC4 (NP_079212.2).
Formulation:	Buffer: PBS with 0.02% sodium azide,50% glycerol,pH7.3.
Concentration:	lot specific
Purification:	Affinity purification
Conjugation:	Unconjugated
Storage:	Store at -20°C. Avoid freeze / thaw cycles.
Stability:	Shelf life: one year from despatch.
Predicted Protein Size:	25kDa/58kDa/59kDa
Gene Name:	zinc finger CCHC-type containing 4
Database Link:	<a href="#">Q9H5U6</a>
Background:	rRNA N6-methyltransferase that specifically methylates the adenine in position 4220 of 28S rRNA. N6-methylation of adenine(4220 in 28S rRNA is required for translation.
Synonyms:	FLJ23024; HSPC052; MGC21108



[View online »](#)

## Product images:



Western blot analysis of extracts of mouse kidney, using ZCCHC4 antibody (TA383459) at 1:1000 dilution. | Secondary antibody: HRP Goat Anti-Rabbit IgG (H+L) at 1:10000 dilution. | Lysates/proteins: 25ug per lane. | Blocking buffer: 3% nonfat dry milk in TBST. | Detection: ECL Basic Kit . | Exposure time: 30s.