

Product datasheet for **TA383458S**

ZCCHC3 Rabbit Polyclonal Antibody

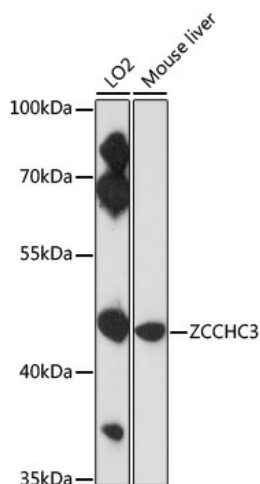
Product data:

Product Type:	Primary Antibodies
Applications:	ELISA, ICC/IF, WB
Recommended Dilution:	WB, 1:500 - 1:2000 IF/ICC, 1:50 - 1:200 ELISA, Recommended starting concentration is 1 µg/mL. Please optimize the concentration based on your specific assay requirements.
Reactivity:	Human, Mouse
Host:	Rabbit
Isotype:	IgG
Clonality:	Polyclonal
Formulation:	Buffer: PBS with 0.02% sodium azide, 50% glycerol, pH 7.3.
Concentration:	lot specific
Purification:	Affinity purification
Conjugation:	Unconjugated
Storage:	Store at -20°C. Avoid freeze / thaw cycles.
Stability:	Shelf life: one year from despatch.
Predicted Protein Size:	44kDa
Gene Name:	zinc finger CCHC-type containing 3
Database Link:	Entrez Gene 85364 Human Q9NUD5
Background:	Enables double-stranded DNA binding activity. Involved in several processes, including cellular response to exogenous dsRNA; detection of virus; and positive regulation of RIG-I signaling pathway. Located in cytoplasm.
Synonyms:	C20orf99; dj1103G7.7; MGC104290



[View online »](#)

Product images:



Western blot analysis of various lysates using ZCCHC3 Rabbit pAb (TA383458) at 1:3000 dilution.

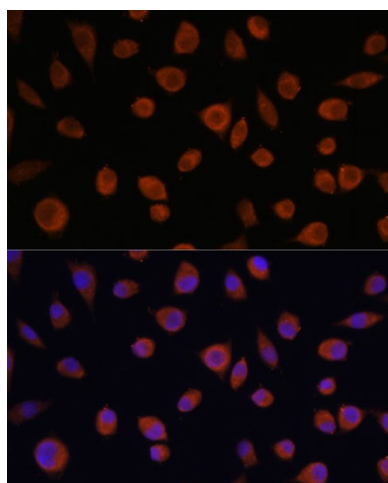
Secondary antibody: HRP-conjugated Goat anti-Rabbit IgG (H+L) (AS014) at 1:10000 dilution.

Lysates/proteins: 25µg per lane.

Blocking buffer: 3% nonfat dry milk in TBST.

Detection: ECL Enhanced Kit (RM00021).

Exposure time: 30s.



Immunofluorescence analysis of L929 cells using ZCCHC3 Rabbit pAb (TA383458) at dilution of 1:100. Secondary antibody: Cy3-conjugated Goat anti-Rabbit IgG (H+L) (AS007) at 1:500 dilution. Blue: DAPI for nuclear staining.