

Product datasheet for **TA383455S**

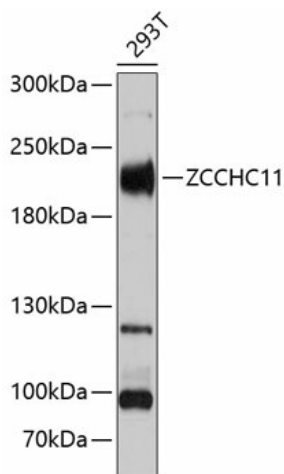
ZCH11 (ZCCHC11) Rabbit Polyclonal Antibody

Product data:

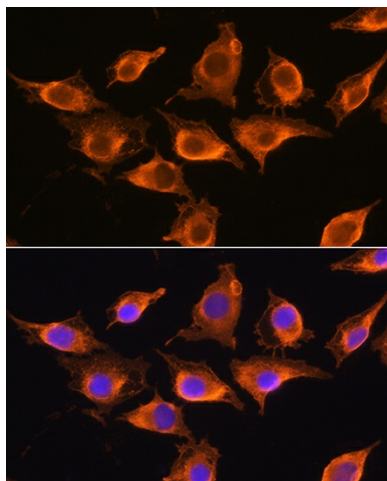
Product Type:	Primary Antibodies
Applications:	ELISA, ICC/IF, WB
Recommended Dilution:	WB, 1:500 - 1:1000 IF/ICC, 1:50 - 1:200 ELISA, Recommended starting concentration is 1 µg/mL. Please optimize the concentration based on your specific assay requirements.
Reactivity:	Human, Mouse, Rat
Modifications:	Unmodified
Host:	Rabbit
Isotype:	IgG
Clonality:	Polyclonal
Formulation:	Buffer: PBS with 0.02% sodium azide, 50% glycerol, pH 7.3.
Concentration:	lot specific
Purification:	Affinity purification
Conjugation:	Unconjugated
Storage:	Store at -20°C. Avoid freeze / thaw cycles.
Stability:	Shelf life: one year from despatch.
Predicted Protein Size:	185kDa
Gene Name:	zinc finger CCHC-type containing 11
Database Link:	Entrez Gene 23318 Human Q5TAX3
Background:	Enables RNA uridylyltransferase activity. Involved in RNA metabolic process; negative regulation of transposition, RNA-mediated; and stem cell population maintenance. Located in cytoplasmic ribonucleoprotein granule; cytosol; and nucleolus. Implicated in liver benign neoplasm. Biomarker of breast cancer.
Synonyms:	KIAA0191; PAPD3; TUT4



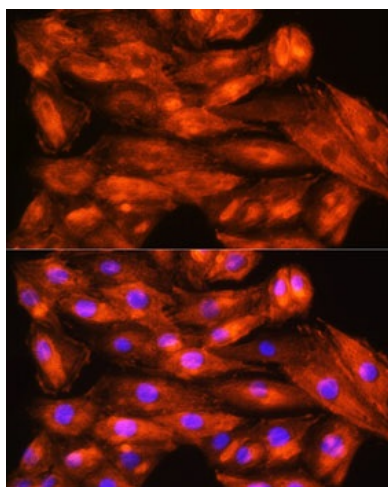
[View online »](#)

Product images:


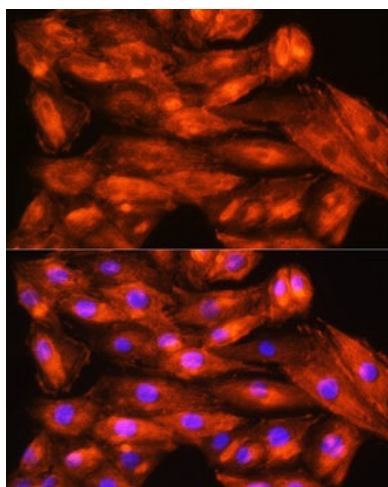
Western blot analysis of lysates from 293T cells



Immunofluorescence analysis of U2OS cells using ZCCHC11 Rabbit pAb (TA383455) at dilution of 1:100. Secondary antibody: Cy3-conjugated Goat anti-Rabbit IgG (H+L) (AS007) at 1:500 dilution. Blue: DAPI for nuclear staining.



Immunofluorescence analysis of L929 cells using ZCCHC11 Rabbit pAb ([TA383455]) at dilution of 1:100. Secondary antibody: Cy3-conjugated Goat anti-Rabbit IgG (H+L) (AS007) at 1:500 dilution. Blue: DAPI for nuclear staining.



Immunofluorescence analysis of H9C2 cells using ZCCHC11 Rabbit pAb ([TA383455]) at dilution of 1:100. Secondary antibody: Cy3-conjugated Goat anti-Rabbit IgG (H+L) (AS007) at 1:500 dilution. Blue: DAPI for nuclear staining.