

Product datasheet for **TA383455**

ZCH11 (ZCCHC11) Rabbit Polyclonal Antibody

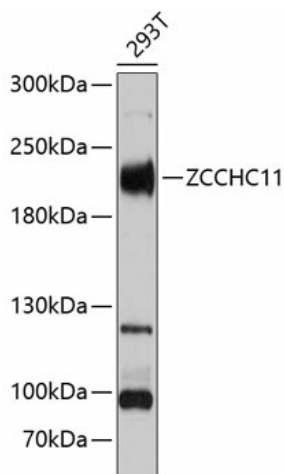
Product data:

Product Type:	Primary Antibodies
Applications:	ICC/IF, WB
Recommended Dilution:	WB, 1:500 - 1:1000 IF, 1:50 - 1:200
Reactivity:	Human, Mouse, Rat
Modifications:	Unmodified
Host:	Rabbit
Isotype:	IgG
Clonality:	Polyclonal
Immunogen:	Recombinant fusion protein containing a sequence corresponding to amino acids 1-290 of human ZCCHC11 (NP_001009881.1).
Formulation:	Buffer: PBS with 0.02% sodium azide, 50% glycerol, pH 7.3.
Concentration:	lot specific
Purification:	Affinity purification
Conjugation:	Unconjugated
Storage:	Store at -20°C. Avoid freeze / thaw cycles.
Stability:	Shelf life: one year from despatch.
Predicted Protein Size:	81kDa/185kDa
Gene Name:	zinc finger CCHC-type containing 11
Database Link:	Entrez Gene 23318 Human Q5TAX3
Background:	ZCCHC11 is an RNA uridylyltransferase (EC 2.7.7.52) that uses UTP to add uridines to the 3-prime end of substrate RNA molecules (Jones et al., 2009 [PubMed 19701194]).
Synonyms:	KIAA0191; PAPD3; TUT4

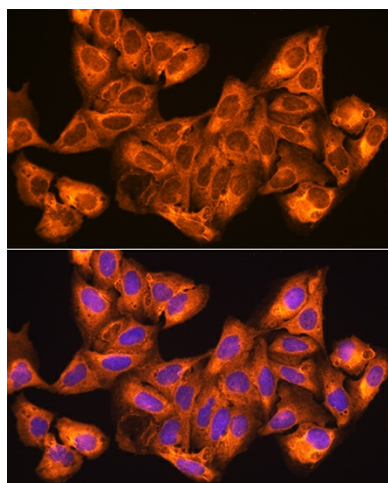


[View online »](#)

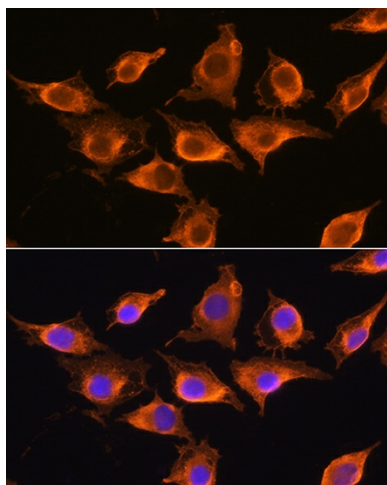
Product images:



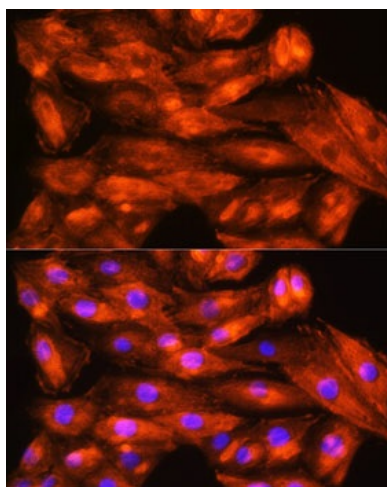
Western blot analysis of extracts of 293T cells, using ZCCHC11 Antibody (TA383455) at 1:3000 dilution. | Secondary antibody: HRP Goat Anti-Rabbit IgG (H+L) at 1:10000 dilution. | Lysates/proteins: 25ug per lane. | Blocking buffer: 3% nonfat dry milk in TBST. | Detection: ECL Basic Kit. | Exposure time: 20s.



Immunofluorescence analysis of U2OS cells using ZCCHC11 Rabbit pAb (TA383455) at dilution of 1:100. Blue: DAPI for nuclear staining.



Immunofluorescence analysis of L929 cells using ZCCHC11 Rabbit pAb (TA383455) at dilution of 1:100. Blue: DAPI for nuclear staining.



Immunofluorescence analysis of H9C2 cells using ZCCHC11 Rabbit pAb (TA383455) at dilution of 1:100. Blue: DAPI for nuclear staining.