

Product datasheet for **TA383452S**

ZC3HAV1 Rabbit Polyclonal Antibody

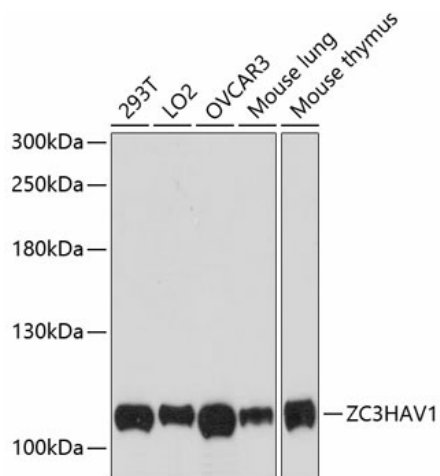
Product data:

Product Type:	Primary Antibodies
Applications:	WB
Recommended Dilution:	WB,1:500 - 1:2000
Reactivity:	Human, Mouse
Modifications:	Unmodified
Host:	Rabbit
Isotype:	IgG
Clonality:	Polyclonal
Immunogen:	Recombinant fusion protein containing a sequence corresponding to amino acids 150-400 of human ZC3HAV1 (NP_078901.3).
Formulation:	Buffer: PBS with 0.02% sodium azide,50% glycerol,pH7.3.
Concentration:	lot specific
Purification:	Affinity purification
Conjugation:	Unconjugated
Storage:	Store at -20°C. Avoid freeze / thaw cycles.
Stability:	Shelf life: one year from despatch.
Predicted Protein Size:	18kDa/42kDa/67kDa/77kDa/101kDa
Gene Name:	zinc finger CCCH-type containing, antiviral 1
Database Link:	Entrez Gene 56829 Human Q7Z2W4
Background:	This gene encodes a CCCH-type zinc finger protein that is thought to prevent infection by retroviruses. Studies of the rat homolog indicate that the protein may primarily function to inhibit viral gene expression and induce an innate immunity to viral infection. Alternative splicing occurs at this locus and two variants, each encoding distinct isoforms, are described.
Synonyms:	DKFZp686F2052; DKFZp686H1869; DKFZp686O19171; FLB6421; FLJ13288; MGC48898; ZAP; ZC3H2; ZC3HDC2



[View online »](#)

Product images:



Western blot analysis of extracts of various cell lines, using ZC3HAV1 antibody ([TA383452]) at 1:3000 dilution. | Secondary antibody: HRP Goat Anti-Rabbit IgG (H+L) at 1:10000 dilution. | Lysates/proteins: 25ug per lane. | Blocking buffer: 3% nonfat dry milk in TBST. | Detection: ECL Basic Kit . | Exposure time: 30s.