

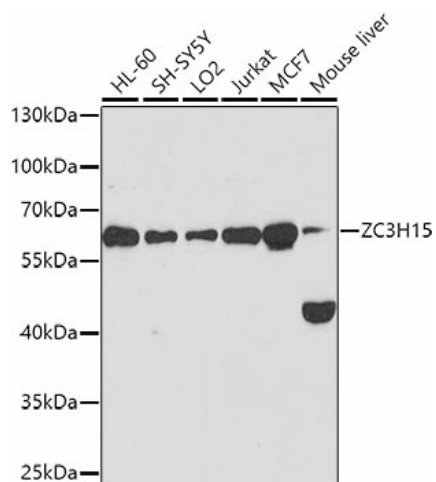
## Product datasheet for **TA383450**

### ZC3H15 Rabbit Polyclonal Antibody

#### Product data:

Product Type:	Primary Antibodies
Applications:	ELISA, WB
Recommended Dilution:	WB, 1:500 - 1:2000 ELISA, Recommended starting concentration is 1 µg/mL. Please optimize the concentration based on your specific assay requirements.
Reactivity:	Human, Mouse
Modifications:	Unmodified
Host:	Rabbit
Isotype:	IgG
Clonality:	Polyclonal
Formulation:	Buffer: PBS with 0.02% sodium azide, 50% glycerol, pH 7.3.
Concentration:	lot specific
Purification:	Affinity purification
Conjugation:	Unconjugated
Storage:	Store at -20°C. Avoid freeze / thaw cycles.
Stability:	Shelf life: one year from despatch.
Predicted Protein Size:	49kDa
Gene Name:	zinc finger CCCH-type containing 15
Database Link:	<a href="#">Entrez Gene 55854 Human</a> <a href="#">Q8WU90</a>
Background:	Enables RNA binding activity and cadherin binding activity. Involved in positive regulation of GTPase activity. Located in cytosol.
Synonyms:	DFRP1; HT010; LEREPO4; MSTP012

[View online »](#)

**Product images:**


Western blot analysis of various lysates using ZC3H15 Rabbit pAb (TA383450) at 1:1000 dilution. Secondary antibody: HRP-conjugated Goat anti-Rabbit IgG (H+L) at 1:10000 dilution. Lysates/proteins: 25µg per lane. Blocking buffer: 3% nonfat dry milk in TBST. Detection: ECL Basic Kit . Exposure time: 90s.