

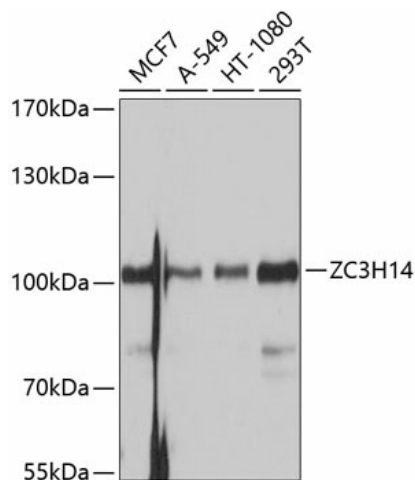
## Product datasheet for **TA383449S**

### ZC3H14 Rabbit Polyclonal Antibody

#### Product data:

Product Type:	Primary Antibodies
Applications:	ELISA, WB
Recommended Dilution:	WB, 1:500 - 1:2000 ELISA, Recommended starting concentration is 1 µg/mL. Please optimize the concentration based on your specific assay requirements.
Reactivity:	Human, Mouse, Rat
Modifications:	Unmodified
Host:	Rabbit
Isotype:	IgG
Clonality:	Polyclonal
Formulation:	Buffer: PBS with 0.02% sodium azide, 50% glycerol, pH 7.3.
Concentration:	lot specific
Purification:	Affinity purification
Conjugation:	Unconjugated
Storage:	Store at -20°C. Avoid freeze / thaw cycles.
Stability:	Shelf life: one year from despatch.
Predicted Protein Size:	83kDa
Gene Name:	zinc finger CCCH-type containing 14
Database Link:	<a href="#">Entrez Gene 79882 Human Q6PJT7</a>
Background:	The protein encoded by this gene is a poly(A)-binding protein that can affect gene expression and poly(A) tail length. The encoded protein may influence mRNA stability, nuclear export, and translation.
Synonyms:	FLJ11806; MGC26892; NY-REN-37; UKp68


[View online »](#)

**Product images:**


Western blot analysis of various lysates using ZC3H14 Rabbit pAb ([TA383449]) at 1:1000 dilution.

Secondary antibody: HRP-conjugated Goat anti-Rabbit IgG (H+L) (AS014) at 1:10000 dilution.

Lysates/proteins: 25µg per lane.

Blocking buffer: 3% nonfat dry milk in TBST.

Detection: ECL Basic Kit (RM00020).

Exposure time: 1s.