

## Product datasheet for **TA383448**

### ZC3H12D Rabbit Polyclonal Antibody

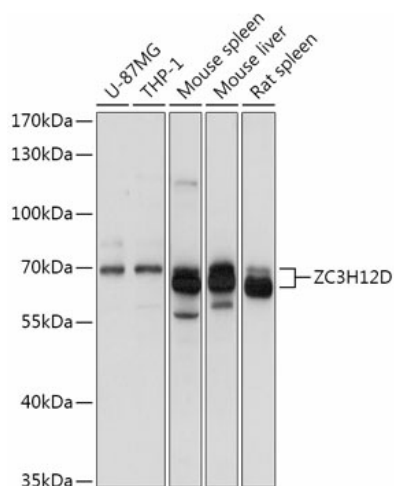
#### Product data:

Product Type:	Primary Antibodies
Applications:	ICC/IF, WB
Recommended Dilution:	WB, 1:500 - 1:2000 IF, 1:50 - 1:200
Reactivity:	Human, Mouse, Rat
Modifications:	Unmodified
Host:	Rabbit
Isotype:	IgG
Clonality:	Polyclonal
Immunogen:	Recombinant fusion protein containing a sequence corresponding to amino acids 150-230 of human ZC3H12D (NP_997243.2).
Formulation:	Buffer: PBS with 0.02% sodium azide, 50% glycerol, pH 7.3.
Concentration:	lot specific
Purification:	Affinity purification
Conjugation:	Unconjugated
Storage:	Store at -20°C. Avoid freeze / thaw cycles.
Stability:	Shelf life: one year from despatch.
Predicted Protein Size:	25kDa/36kDa/58kDa
Gene Name:	zinc finger CCCH-type containing 12D
Database Link:	<a href="#">Entrez Gene 340152 Human A2A288</a>
Background:	May regulate cell growth likely by suppressing RB1 phosphorylation. May function as RNase and regulate the levels of target RNA species (Potential). In association with ZC3H12A enhances the degradation of interleukin IL-6 mRNA level in activated macrophages. Serve as a tumor suppressor in certain leukemia cells. Overexpression inhibits the G1 to S phase progression through suppression of RB1 phosphorylation.
Synonyms:	C6orf95; dj281H8.1; FLJ00361; FLJ46041; MCPIP4; p34; TFL

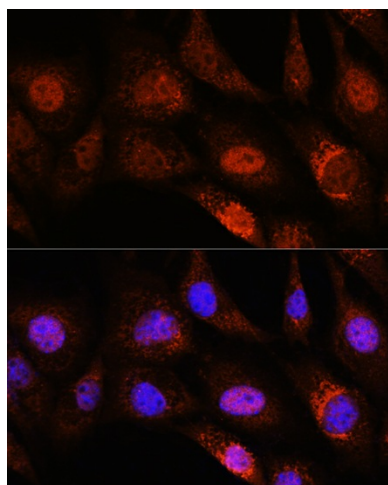


[View online »](#)

## Product images:



Western blot analysis of extracts of various cell lines, using ZC3H12D antibody (TA383448) at 1:1000 dilution. | Secondary antibody: HRP Goat Anti-Rabbit IgG (H+L) at 1:10000 dilution. | Lysates/proteins: 25ug per lane. | Blocking buffer: 3% nonfat dry milk in TBST. | Detection: ECL Basic Kit. | Exposure time: 1s.



Immunofluorescence analysis of NIH/3T3 cells using ZC3H12D Rabbit pAb (TA383448) at dilution of 1:100. Blue: DAPI for nuclear staining.