

## Product datasheet for **TA383447S**

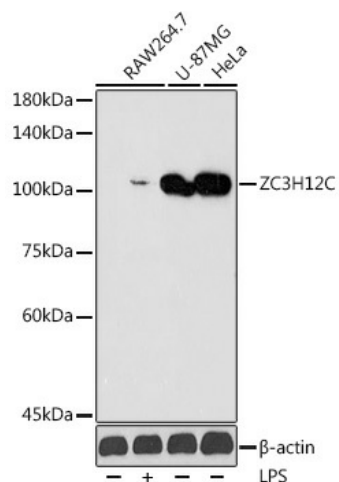
### ZC3H12C Rabbit Polyclonal Antibody

#### Product data:

Product Type:	Primary Antibodies
Applications:	ELISA, ICC/IF, WB
Recommended Dilution:	WB, 1:500 - 1:1000 IF/ICC, 1:50 - 1:200 ELISA, Recommended starting concentration is 1 µg/mL. Please optimize the concentration based on your specific assay requirements.
Reactivity:	Human, Mouse
Modifications:	Unmodified
Host:	Rabbit
Isotype:	IgG
Clonality:	Polyclonal
Formulation:	Buffer: PBS with 0.02% sodium azide, 50% glycerol, pH 7.3.
Concentration:	lot specific
Purification:	Affinity purification
Conjugation:	Unconjugated
Storage:	Store at -20°C. Avoid freeze / thaw cycles.
Stability:	Shelf life: one year from despatch.
Predicted Protein Size:	99kDa
Gene Name:	zinc finger CCCH-type containing 12C
Database Link:	<a href="#">Entrez Gene 85463 Human</a> <a href="#">Q9C0D7</a>
Background:	Predicted to enable endoribonuclease activity and mRNA binding activity. Predicted to be involved in RNA phosphodiester bond hydrolysis, endonucleolytic. Predicted to be active in cytoplasmic ribonucleoprotein granule and nucleus.
Synonyms:	KIAA1726; MCP1P3


[View online »](#)

## Product images:



Western blot analysis of various lysates using ZC3H12C Rabbit pAb ([TA383447]) at 1:1000 dilution. Raw264.7 cells were treated by LPS (1 µg/ml) at 37°C for 8 hours. Secondary antibody: HRP-conjugated Goat anti-Rabbit IgG (H+L) (AS014) at 1:10000 dilution. Lysates/proteins: 25µg per lane. Blocking buffer: 3% nonfat dry milk in TBST. Detection: ECL Enhanced Kit (RM00021). Exposure time: 180s.