

## Product datasheet for **TA383420S**

### YTHDF3 Rabbit Polyclonal Antibody

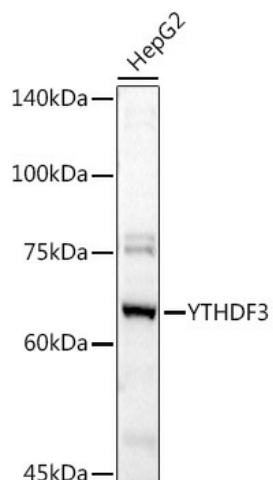
#### Product data:

Product Type:	Primary Antibodies
Applications:	ELISA, ICC/IF, IHC, IP, WB
Recommended Dilution:	WB, 1:500 - 1:1000 IHC-P, 1:100 - 1:500 IF/ICC, 1:50 - 1:200 IP, 0.5µg-4µg antibody for 200µg-400µg extracts of whole cells ELISA, Recommended starting concentration is 1 µg/mL. Please optimize the concentration based on your specific assay requirements.
Reactivity:	Human, Mouse, Rat
Modifications:	Unmodified
Host:	Rabbit
Isotype:	IgG
Clonality:	Polyclonal
Formulation:	Buffer: PBS with 0.02% sodium azide, 50% glycerol, pH 7.3.
Concentration:	lot specific
Purification:	Affinity purification
Conjugation:	Unconjugated
Storage:	Store at -20°C. Avoid freeze / thaw cycles.
Stability:	Shelf life: one year from despatch.
Predicted Protein Size:	64kDa
Gene Name:	YTH N6-methyladenosine RNA binding protein 3
Database Link:	<a href="#">Entrez Gene 253943 Human Q7Z739</a>
Background:	This gene encodes a member of the YTH (YT521-B homology) domain protein family. The YTH domain is common in eukaryotes, is often found in the middle of the protein sequence, and may function in binding to RNA. Alternative splicing results in multiple transcript variants.
Synonyms:	FLJ31657

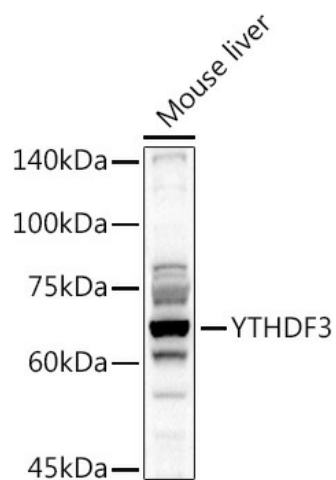


[View online »](#)

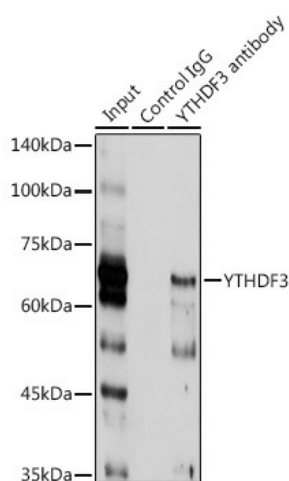
Product images:



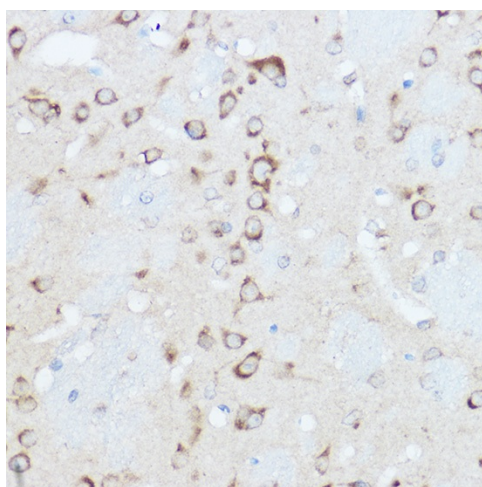
Western blot analysis of lysates from Mouse liver



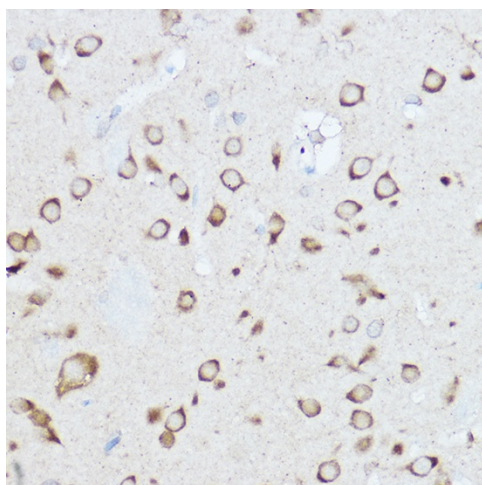
Western blot analysis of lysates from HepG2 cells



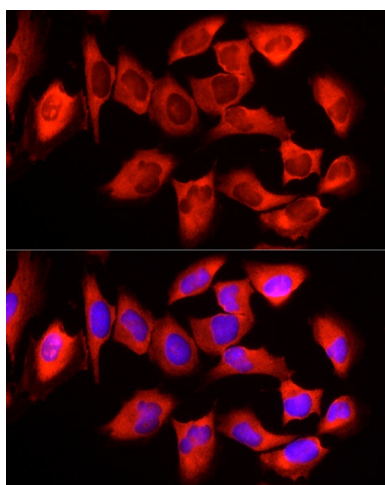
Immunoprecipitation analysis of 300 µg extracts of HT-1080 cells using 3 µg YTHDF3 antibody ([TA383420]). Western blot was performed from the immunoprecipitate using YTHDF3 antibody ([TA383420]) at a dilution of 1:1000.



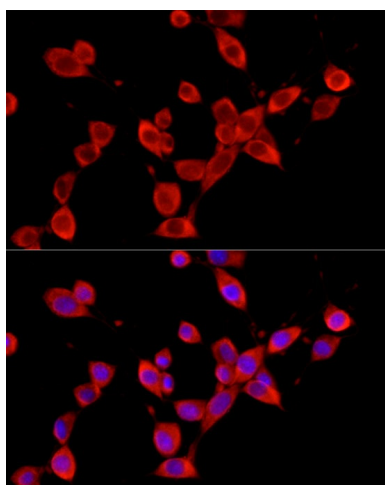
Immunohistochemistry analysis of paraffin-embedded Mouse brain using YTHDF3 Rabbit pAb ([TA383420]) at dilution of 1:500 (40x lens). High pressure antigen retrieval performed with 0.01M Citrate Bufferr (pH 6.0) prior to IHC staining.



Immunohistochemistry analysis of paraffin-embedded Rat brain using YTHDF3 Rabbit pAb ([TA383420]) at dilution of 1:500 (40x lens). High pressure antigen retrieval performed with 0.01M Citrate Bufferr (pH 6.0) prior to IHC staining.



Immunofluorescence analysis of HeLa cells using YTHDF3 Rabbit pAb ([TA383420]) at dilution of 1:50 (40x lens). Secondary antibody: Cy3-conjugated Goat anti-Rabbit IgG (H+L) (AS007) at 1:500 dilution. Blue: DAPI for nuclear staining.



Immunofluorescence analysis of NIH/3T3 cells using YTHDF3 Rabbit pAb ([TA383420]) at dilution of 1:50 (40x lens). Secondary antibody: Cy3-conjugated Goat anti-Rabbit IgG (H+L) (AS007) at 1:500 dilution. Blue: DAPI for nuclear staining.