

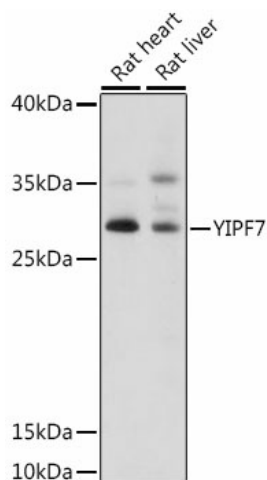
Product datasheet for **TA383409**

YIPF7 Rabbit Polyclonal Antibody

Product data:

Product Type:	Primary Antibodies
Applications:	ELISA, WB
Recommended Dilution:	WB, 1:500 - 1:2000 ELISA, Recommended starting concentration is 1 µg/mL. Please optimize the concentration based on your specific assay requirements.
Reactivity:	Rat
Modifications:	Unmodified
Host:	Rabbit
Isotype:	IgG
Clonality:	Polyclonal
Formulation:	Buffer: PBS with 0.01% thimerosal, 50% glycerol, pH7.3.
Concentration:	lot specific
Purification:	Affinity purification
Conjugation:	Unconjugated
Storage:	Store at -20°C. Avoid freeze / thaw cycles.
Stability:	Shelf life: one year from despatch.
Predicted Protein Size:	31kDa
Gene Name:	Yip1 domain family member 7
Database Link:	Q8N8F6
Background:	Predicted to be involved in endoplasmic reticulum to Golgi vesicle-mediated transport and vesicle fusion with Golgi apparatus. Predicted to be located in endoplasmic reticulum membrane. Predicted to be integral component of membrane. Predicted to be active in trans-Golgi network.
Synonyms:	FinGER9; FLJ39576; MGC120164; YIP1B

[View online »](#)

Product images:

Western blot analysis of various lysates using YIPF7 Rabbit pAb (TA383409) at 1:1000 dilution. Secondary antibody: HRP-conjugated Goat anti-Rabbit IgG (H+L) (AS014) at 1:10000 dilution. Lysates/proteins: 25µg per lane. Blocking buffer: 3% nonfat dry milk in TBST. Detection: ECL Basic Kit (RM00020). Exposure time: 15s.