

Product datasheet for **TA383404S**

YB1 (YBX1) Rabbit Polyclonal Antibody

Product data:

Product Type:	Primary Antibodies
Applications:	ICC/IF, IHC, WB
Recommended Dilution:	WB,1:500 - 1:2000 IHC,1:100 - 1:200 IF,1:50 - 1:200
Reactivity:	Human, Mouse, Rat
Modifications:	Unmodified
Host:	Rabbit
Isotype:	IgG
Clonality:	Polyclonal
Immunogen:	A synthetic peptide corresponding to a sequence within amino acids 100-200 of human YB-1/YB-1/YBX1 (NP_004550.2).
Formulation:	Buffer: PBS with 0.02% sodium azide,50% glycerol,pH7.3.
Concentration:	lot specific
Purification:	Affinity purification
Conjugation:	Unconjugated
Storage:	Store at -20°C. Avoid freeze / thaw cycles.
Stability:	Shelf life: one year from despatch.
Predicted Protein Size:	35kDa
Gene Name:	Y-box binding protein 1
Database Link:	Entrez Gene 4904 Human P67809



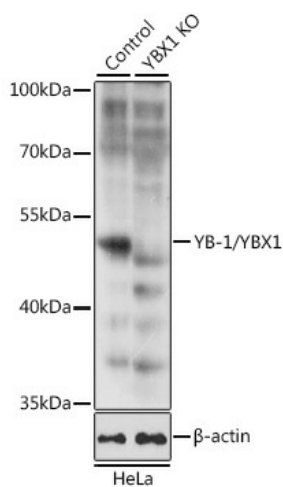
[View online »](#)

Background:

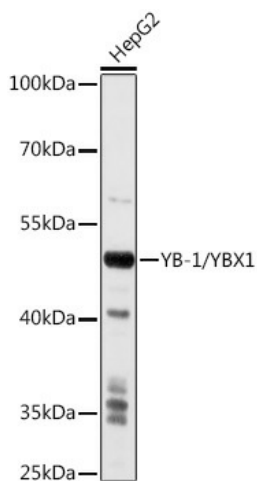
This gene encodes a highly conserved cold shock domain protein that has broad nucleic acid binding properties. The encoded protein functions as both a DNA and RNA binding protein and has been implicated in numerous cellular processes including regulation of transcription and translation, pre-mRNA splicing, DNA repair and mRNA packaging. This protein is also a component of messenger ribonucleoprotein (mRNP) complexes and may have a role in microRNA processing. This protein can be secreted through non-classical pathways and functions as an extracellular mitogen. Aberrant expression of the gene is associated with cancer proliferation in numerous tissues. This gene may be a prognostic marker for poor outcome and drug resistance in certain cancers. Alternate splicing results in multiple transcript variants. Pseudogenes of this gene are found on multiple chromosomes.

Synonyms:

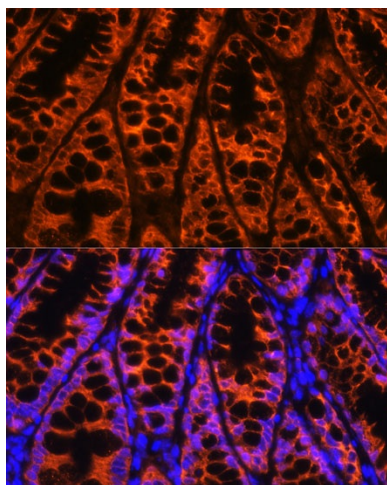
BP-8; CBF-A; CSDA2; CSDB; DBPB; EFI-A; MDR-NF1; MGC104858; MGC110976; MGC117250; NSEP-1; NSEP1; YB-1; YB1

Product images:

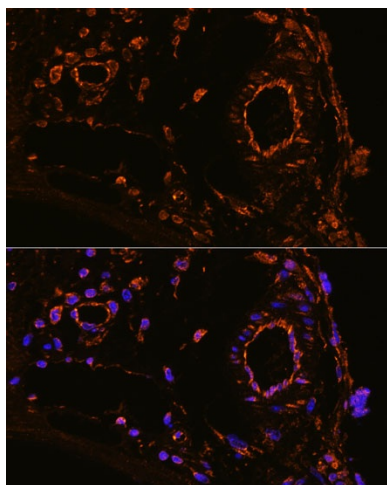
Western blot analysis of extracts from normal (control) and YB-1/YB-1/YBX1 knockout (KO) HeLa cells, using YB-1/YB-1/YBX1 antibody ([TA383404]) at 1:1000 dilution. | Secondary antibody: HRP Goat Anti-Rabbit IgG (H+L) at 1:10000 dilution. | Lysates/proteins: 25ug per lane. | Blocking buffer: 3% nonfat dry milk in TBST. | Detection: ECL Basic Kit . | Exposure time: 5s.



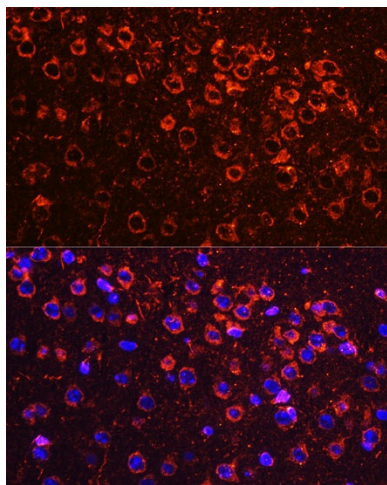
Western blot analysis of extracts of HepG2 cells, using YB-1/YB-1/YBX1 antibody ([TA383404]) at 1:1000 dilution. | Secondary antibody: HRP Goat Anti-Rabbit IgG (H+L) at 1:10000 dilution. | Lysates/proteins: 25ug per lane. | Blocking buffer: 3% nonfat dry milk in TBST. | Detection: ECL Basic Kit . | Exposure time: 10s.



Immunofluorescence analysis of mouse colon using YB-1/YB-1/YBX1 antibody ([TA383404]) at dilution of 1:100. Blue: DAPI for nuclear staining.



Immunofluorescence analysis of mouse colone artery using YB-1/YB-1/YBX1 antibody ([TA383404]) at dilution of 1:100. Blue: DAPI for nuclear staining.



Immunofluorescence analysis of mouse brain using YB-1/YB-1/YBX1 antibody ([TA383404]) at dilution of 1:100. Blue: DAPI for nuclear staining.