

Product datasheet for **TA383398**

YAP1 Rabbit Polyclonal Antibody

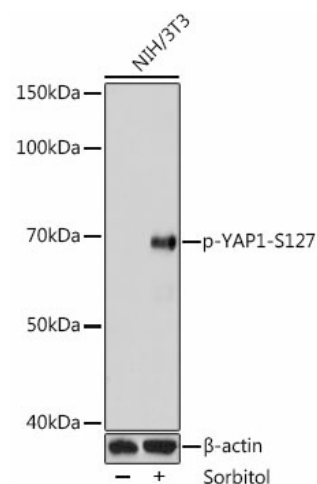
Product data:

Product Type:	Primary Antibodies
Applications:	ICC/IF, IHC, WB
Recommended Dilution:	WB,1:500 - 1:1000 IHC,1:50 - 1:200 IF,1:50 - 1:100
Reactivity:	Human, Mouse, Rat
Modifications:	Phospho S127
Host:	Rabbit
Isotype:	IgG
Clonality:	Polyclonal
Immunogen:	A synthetic phosphorylated peptide around S127 of human YAP1 (NP_001123617.1).
Formulation:	Buffer: PBS with 0.02% sodium azide,50% glycerol,pH7.3.
Concentration:	lot specific
Purification:	Affinity purification
Conjugation:	Unconjugated
Storage:	Store at -20°C. Avoid freeze / thaw cycles.
Stability:	Shelf life: one year from despatch.
Predicted Protein Size:	36kDa/48kDa/49kDa/50kDa/52kDa/53kDa/54kDa
Gene Name:	Yes associated protein 1
Database Link:	Entrez Gene 10413 Human P46937
Background:	This gene encodes a downstream nuclear effector of the Hippo signaling pathway which is involved in development, growth, repair, and homeostasis. This gene is known to play a role in the development and progression of multiple cancers as a transcriptional regulator of this signaling pathway and may function as a potential target for cancer treatment. Alternative splicing results in multiple transcript variants encoding different isoforms.
Synonyms:	YAP; YAP2; YAP65; YKI

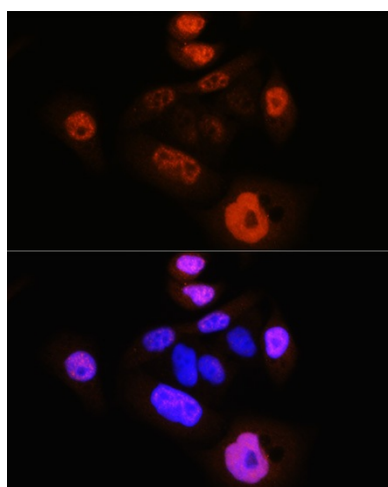


[View online »](#)

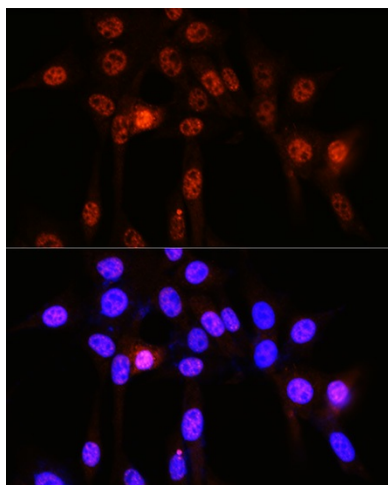
Product images:



Western blot analysis of extracts of NIH3T3 cells, using Phospho-YAP1-S127 antibody (TA383398) at 1:1000 dilution. NIH3T3 cells were treated by Sorbitol (0.2M) at 37°C for 60 minutes after serum-starvation overnight. | Secondary antibody: HRP Goat Anti-Rabbit IgG (H+L) at 1:10000 dilution. | Lysates/proteins: 25ug per lane. | Blocking buffer: 3% BSA. | Detection: ECL Enhanced Kit . | Exposure time: 60s.



Immunofluorescence analysis of HeLa cells using Phospho-YAP1-S127 Rabbit pAb (TA383398) at dilution of 1:100 (40x lens). Blue: DAPI for nuclear staining.



Immunofluorescence analysis of NIH-3T3 cells using Phospho-YAP1-S127 Rabbit pAb (TA383398) at dilution of 1:100 (40x lens). Blue: DAPI for nuclear staining.