

Product datasheet for **TA383381S**

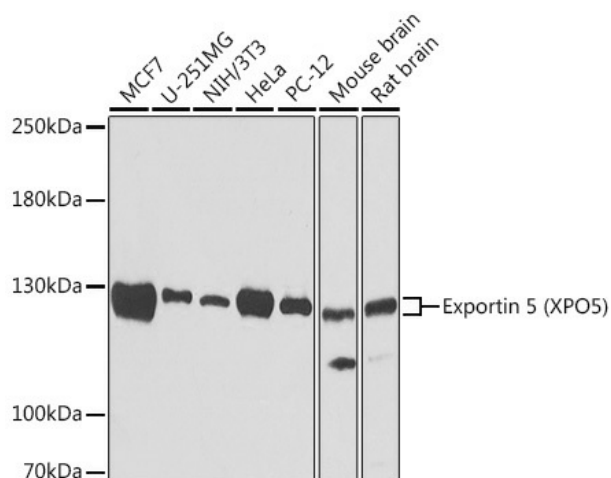
Exportin 5 (XPO5) Rabbit Polyclonal Antibody

Product data:

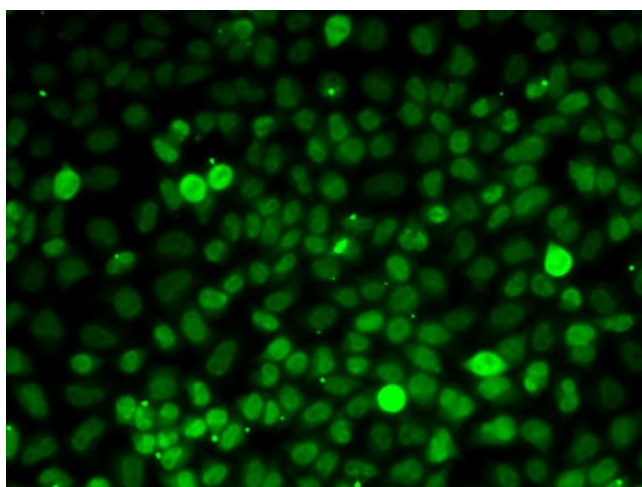
Product Type:	Primary Antibodies
Applications:	ICC/IF, IP, WB
Recommended Dilution:	WB,1:500 - 1:2000 IF,1:50 - 1:100 IP,1:50 - 1:200
Reactivity:	Human, Mouse, Rat
Modifications:	Unmodified
Host:	Rabbit
Isotype:	IgG
Clonality:	Polyclonal
Immunogen:	Recombinant fusion protein containing a sequence corresponding to amino acids 925-1204 of human Exportin 5 (Exportin 5 (XPO5)) (NP_065801.1).
Formulation:	Buffer: PBS with 0.02% sodium azide,50% glycerol,pH7.3.
Concentration:	lot specific
Purification:	Affinity purification
Conjugation:	Unconjugated
Storage:	Store at -20°C. Avoid freeze / thaw cycles.
Stability:	Shelf life: one year from despatch.
Predicted Protein Size:	136kDa
Gene Name:	exportin 5
Database Link:	Entrez Gene 57510 Human Q9HAV4
Background:	This gene encodes a member of the karyopherin family that is required for the transport of small RNAs and double-stranded RNA-binding proteins from the nucleus to the cytoplasm. The encoded protein translocates cargo through the nuclear pore complex in a RanGTP-dependent process.
Synonyms:	Exp5; FLJ14239; FLJ32057; FLJ45606; KIAA1291; RANBP21



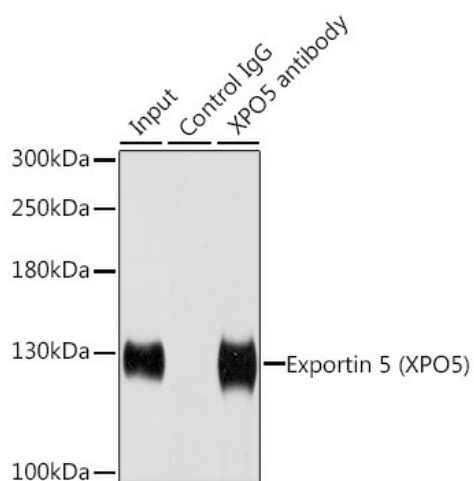
[View online »](#)

Product images:


Western blot analysis of extracts of various cell lines, using Exportin 5 (Exportin 5 (XPO5)) antibody ([TA383381]). | Secondary antibody: HRP Goat Anti-Rabbit IgG (H+L) at 1:10000 dilution. | Lysates/proteins: 25ug per lane. | Blocking buffer: 3% nonfat dry milk in TBST. | Detection: ECL Basic Kit . | Exposure time: 90s.



Immunofluorescence analysis of MCF7 cells using Exportin 5 (Exportin 5 (XPO5)) antibody ([TA383381]).



Immunoprecipitation analysis of 200ug extracts of HeLa cells using 1ug Exportin 5 (Exportin 5 (XPO5)) antibody ([TA383381]). Western blot was performed from the immunoprecipitate using Exportin 5 (Exportin 5 (XPO5)) antibody ([TA383381]) at a dilution of 1:1000.