

## Product datasheet for **TA383356**

### WWC2 Rabbit Polyclonal Antibody

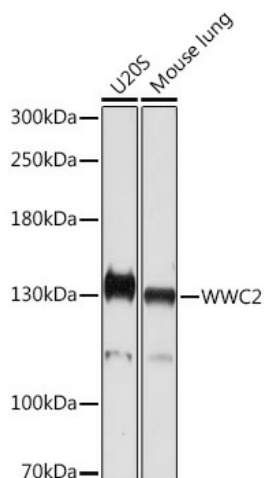
#### Product data:

Product Type:	Primary Antibodies
Applications:	ELISA, IHC, WB
Recommended Dilution:	WB, 1:500 - 1:2000 IHC-P, 1:50 - 1:200 ELISA, Recommended starting concentration is 1 µg/mL. Please optimize the concentration based on your specific assay requirements.
Reactivity:	Human, Mouse, Rat
Host:	Rabbit
Isotype:	IgG
Clonality:	Polyclonal
Formulation:	Buffer: PBS with 0.01% thimerosal, 50% glycerol, pH 7.3.
Concentration:	lot specific
Purification:	Affinity purification
Conjugation:	Unconjugated
Storage:	Store at -20°C. Avoid freeze / thaw cycles.
Stability:	Shelf life: one year from despatch.
Predicted Protein Size:	134kDa
Gene Name:	WW and C2 domain containing 2
Database Link:	<a href="#">Entrez Gene 80014 Human Q6AWC2</a>
Background:	This gene encodes a member of the WW-and-C2-domain-containing family of proteins. Members of this family have two N-terminal WW domains that mediate binding to target proteins harboring L/PPxY motifs, an internal C2 domain for membrane association, and C-terminal alpha protein kinase C binding sites and class III PDZ domain-interaction motifs. Proteins of this family are able to form homo- and heterodimers and to modulate hippo pathway signaling.
Synonyms:	BOMB; FLJ22029; FLJ34082

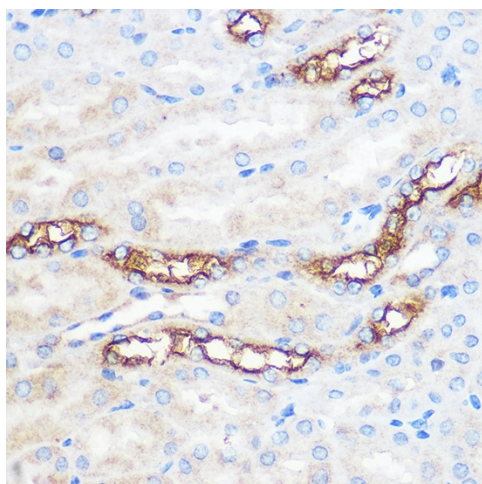


[View online »](#)

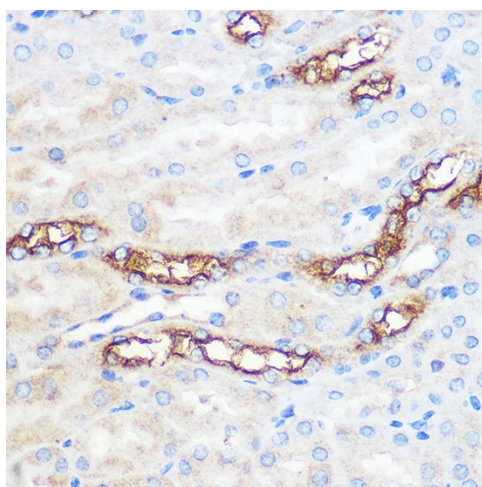
## Product images:



Western blot analysis of various lysates using WWC2 Rabbit pAb (TA383356) at 1:1000 dilution. Secondary antibody: HRP-conjugated Goat anti-Rabbit IgG (H+L) (AS014) at 1:10000 dilution. Lysates/proteins: 25µg per lane. Blocking buffer: 3% nonfat dry milk in TBST. Detection: ECL Basic Kit (RM00020). Exposure time: 5s.



Immunohistochemistry analysis of paraffin-embedded Rat kidney using WWC2 Rabbit pAb (TA383356) at dilution of 1:100 (40x lens). Microwave antigen retrieval performed with 0.01M PBS Buffer (pH 7.2) prior to IHC staining.



Immunohistochemistry analysis of paraffin-embedded Mouse kidney using WWC2 Rabbit pAb (TA383356) at dilution of 1:100 (40x lens). Microwave antigen retrieval performed with 0.01M PBS Buffer (pH 7.2) prior to IHC staining.