

## Product datasheet for **TA383319**

### DFNB31 (WHRN) Rabbit Polyclonal Antibody

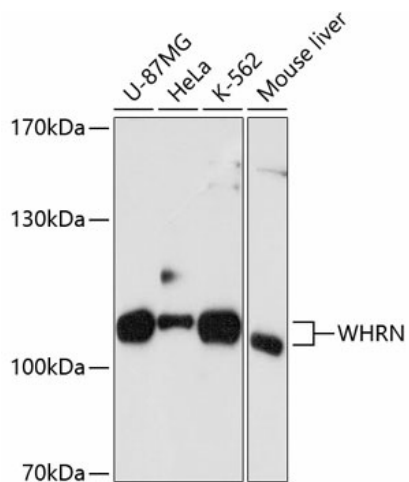
#### Product data:

|                         |   |
|-------------------------|---|
| Product Type:           | Primary Antibodies  |
| Applications:           | WB  |
| Recommended Dilution:   | WB,1:500 - 1:2000   |
| Reactivity:             | Human, Mouse  |
| Modifications:          | Unmodified  |
| Host:                   | Rabbit  |
| Isotype:                | IgG   |
| Clonality:              | Polyclonal  |
| Immunogen:              | Recombinant fusion protein containing a sequence corresponding to amino acids 708-907 of human WHRN (NP_056219.3).  |
| Formulation:            | Buffer: PBS with 0.02% sodium azide,50% glycerol,pH7.3.   |
| Concentration:          | lot specific  |
| Purification:           | Affinity purification   |
| Conjugation:            | Unconjugated  |
| Storage:                | Store at -20°C. Avoid freeze / thaw cycles.   |
| Stability:              | Shelf life: one year from despatch.   |
| Predicted Protein Size: | 37kDa/55kDa/59kDa/96kDa   |
| Gene Name:              | whirlin   |
| Database Link:          | <a href="#">Entrez Gene 25861 Human Q9P202</a>  |
| Background:             | This gene is thought to function in the organization and stabilization of stereocilia elongation and actin cytoskeletal assembly, based on studies of the related mouse gene. Mutations in this gene have been associated with autosomal recessive non-syndromic deafness and Usher Syndrome. Alternative splicing results in multiple transcript variants. |
| Synonyms:               | 1110035G07Rik; AW122018; AW742671; bM340H1.8; C430046P22Rik; Dfnb31; mKIAA1526; whirlinNT1; wi  |



[View online »](#)

## Product images:



Western blot analysis of extracts of various cell lines, using WHRN antibody (TA383319) at 1:1000 dilution. | Secondary antibody: HRP Goat Anti-Rabbit IgG (H+L) at 1:10000 dilution. | Lysates/proteins: 25ug per lane. | Blocking buffer: 3% nonfat dry milk in TBST. | Detection: ECL Basic Kit . | Exposure time: 90s.