

## Product datasheet for **TA383314**

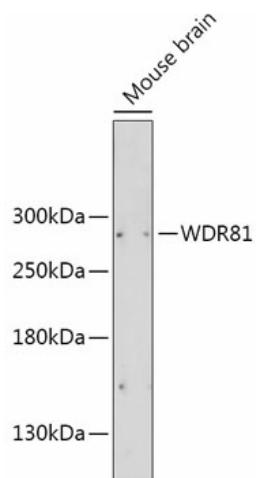
### WDR81 Rabbit Polyclonal Antibody

#### Product data:

Product Type:	Primary Antibodies
Applications:	WB
Recommended Dilution:	WB,1:500 - 1:2000
Reactivity:	Human, Mouse, Rat
Modifications:	Unmodified
Host:	Rabbit
Isotype:	IgG
Clonality:	Polyclonal
Immunogen:	Recombinant fusion protein containing a sequence corresponding to amino acids 360-600 of human WDR81 (NP_689561.2).
Formulation:	Buffer: PBS with 0.02% sodium azide,50% glycerol,pH7.3.
Concentration:	lot specific
Purification:	Affinity purification
Conjugation:	Unconjugated
Storage:	Store at -20°C. Avoid freeze / thaw cycles.
Stability:	Shelf life: one year from despatch.
Predicted Protein Size:	74kDa/77kDa/79kDa/95kDa/197kDa/211kDa
Gene Name:	WD repeat domain 81
Database Link:	<a href="#">Entrez Gene 124997 Human Q562E7</a>
Background:	This gene encodes a multi-domain transmembrane protein, which is predominantly expressed in the brain. Mutations in this gene are associated with autosomal recessive cerebellar ataxia, mental retardation, and dysequilibrium syndrome-2. Alternatively spliced transcript variants encoding different isoforms have been found for this gene.
Synonyms:	FLJ23776; FLJ33817; OTTHUMP00000204690



[View online »](#)

**Product images:**

Western blot analysis of extracts of Mouse brain, using WDR81 antibody (TA383314) at 1:2000 dilution. | Secondary antibody: HRP Goat Anti-Rabbit IgG (H+L) at 1:10000 dilution. | Lysates/proteins: 25ug per lane. | Blocking buffer: 3% nonfat dry milk in TBST. | Detection: ECL Basic Kit . | Exposure time: 90s.