

## Product datasheet for **TA383311S**

### WDR6 Rabbit Polyclonal Antibody

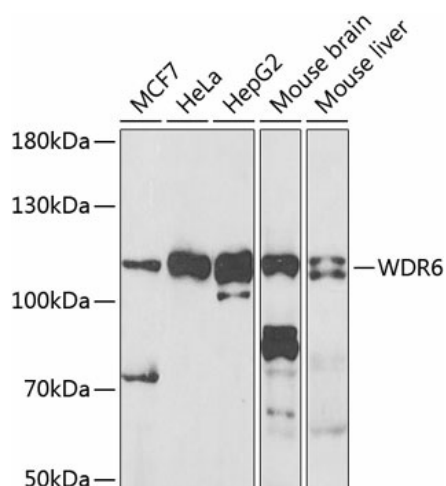
#### Product data:

|                         |  |
|-------------------------|--|
| Product Type:           | Primary Antibodies   |
| Applications:           | ICC/IF, WB   |
| Recommended Dilution:   | WB,1:500 - 1:2000<br>IF,1:50 - 1:200   |
| Reactivity:             | Human, Mouse   |
| Modifications:          | Unmodified   |
| Host:                   | Rabbit   |
| Isotype:                | IgG  |
| Clonality:              | Polyclonal   |
| Immunogen:              | A synthetic peptide of human WDR6  |
| Formulation:            | Buffer: PBS with 0.02% sodium azide,50% glycerol,pH7.3.  |
| Concentration:          | lot specific   |
| Purification:           | Affinity purification  |
| Conjugation:            | Unconjugated   |
| Storage:                | Store at -20°C. Avoid freeze / thaw cycles.  |
| Stability:              | Shelf life: one year from despatch.  |
| Predicted Protein Size: | 121kDa   |
| Gene Name:              | WD repeat domain 6   |
| Database Link:          | <a href="#">Entrez Gene 11180 Human Q9NNW5</a>   |
| Background:             | This gene encodes a member of the WD repeat protein family. WD repeats are minimally conserved regions of approximately 40 amino acids typically bracketed by gly-his and trp-asp (GH-WD), which may facilitate formation of heterotrimeric or multiprotein complexes. The encoded protein interacts with serine/threonine kinase 11, and is implicated in cell growth arrest. Alternative splicing results in multiple transcript variants encoding different isoforms. |
| Synonyms:               | FLJ10218; FLJ52552; FLJ56107; MGC126756; MGC142027   |

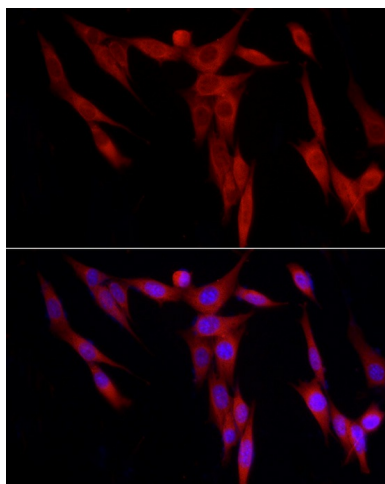


[View online »](#)

## Product images:



Western blot analysis of extracts of various cell lines, using WDR6 antibody ([TA383311]) at 1:1000 dilution. | Secondary antibody: HRP Goat Anti-Rabbit IgG (H+L) at 1:10000 dilution. | Lysates/proteins: 25ug per lane. | Blocking buffer: 3% nonfat dry milk in TBST. | Detection: ECL Basic Kit . | Exposure time: 90s.



Immunofluorescence analysis of NIH/3T3 cells using WDR6 Rabbit pAb ([TA383311]) at dilution of 1:250 (40x lens). Blue: DAPI for nuclear staining.