

Product datasheet for **TA383303S**

Wdr33 Rabbit Polyclonal Antibody

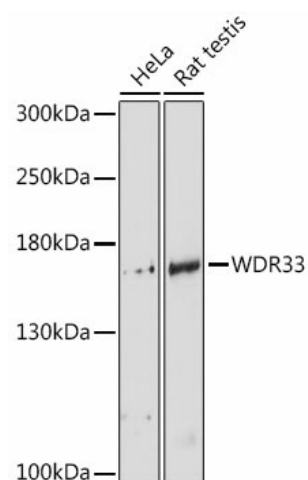
Product data:

Product Type:	Primary Antibodies
Applications:	ELISA, WB
Recommended Dilution:	WB, 1:500 - 1:2000 ELISA, Recommended starting concentration is 1 µg/mL. Please optimize the concentration based on your specific assay requirements.
Reactivity:	Human, Rat
Modifications:	Unmodified
Host:	Rabbit
Isotype:	IgG
Clonality:	Polyclonal
Formulation:	Buffer: PBS with 0.02% sodium azide, 50% glycerol, pH 7.3.
Concentration:	lot specific
Purification:	Affinity purification
Conjugation:	Unconjugated
Storage:	Store at -20°C. Avoid freeze / thaw cycles.
Stability:	Shelf life: one year from despatch.
Predicted Protein Size:	30kDa/38kDa/145kDa
Gene Name:	WD repeat domain 33
Database Link:	Q8K4P0
Background:	Predicted to be involved in mRNA polyadenylation. Predicted to act upstream of or within mRNA processing. Located in nucleus. Orthologous to human WDR33 (WD repeat domain 33).
Synonyms:	FLJ11294; NET14; WDC146



[View online »](#)

Product images:



Western blot analysis of various lysates using WDR33 Rabbit pAb ([TA383303]) at 1:3000 dilution.

Secondary antibody: HRP-conjugated Goat anti-Rabbit IgG (H+L) at 1:10000 dilution.

Lysates/proteins: 25µg per lane.

Blocking buffer: 3% nonfat dry milk in TBST.

Detection: ECL Basic Kit .

Exposure time: 90s.