

## Product datasheet for **TA383299**

### WDR11 Rabbit Polyclonal Antibody

#### Product data:

Product Type:	Primary Antibodies
Applications:	WB
Recommended Dilution:	WB,1:1000 - 1:2000
Reactivity:	Human
Modifications:	Unmodified
Host:	Rabbit
Isotype:	IgG
Clonality:	Polyclonal
Immunogen:	Recombinant fusion protein containing a sequence corresponding to amino acids 975-1224 of human WDR11 (NP_060587.8).
Formulation:	Buffer: PBS with 0.02% sodium azide,50% glycerol,pH7.3.
Concentration:	lot specific
Purification:	Affinity purification
Conjugation:	Unconjugated
Storage:	Store at -20°C. Avoid freeze / thaw cycles.
Stability:	Shelf life: one year from despatch.
Predicted Protein Size:	136kDa
Gene Name:	WD repeat domain 11
Database Link:	<a href="#">Entrez Gene 55717 Human Q9BZH6</a>

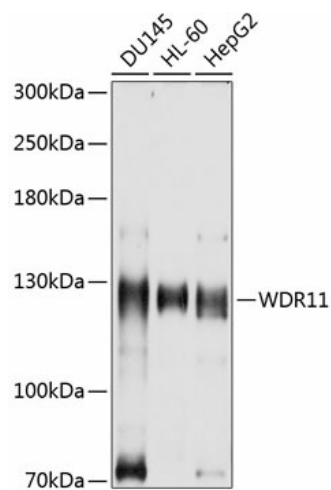
**Background:** This gene encodes a member of the WD repeat protein family. WD repeats are minimally conserved regions of approximately 40 amino acids typically bracketed by gly-his and trp-asp (GH-WD), which may facilitate formation of heterotrimeric or multiprotein complexes. Members of this family are involved in a variety of cellular processes, including cell cycle progression, signal transduction, apoptosis, and gene regulation. This gene is located in the chromosome 10q25-26 region, which is frequently deleted in gliomas and tumors of other tissues, and is disrupted by the t(10;19) translocation rearrangement in glioblastoma cells. The gene location suggests that it is a candidate gene for the tumor suppressor locus.



[View online »](#)

Synonyms: 2900055P10Rik; AW489876; Brwd2; mKIAA1351

### Product images:



Western blot analysis of extracts of various cell lines, using WDR11 antibody (TA383299) at 1:1000 dilution. | Secondary antibody: HRP Goat Anti-Rabbit IgG (H+L) at 1:10000 dilution. | Lysates/proteins: 25ug per lane. | Blocking buffer: 3% nonfat dry milk in TBST. | Detection: ECL Basic Kit . | Exposure time: 30s.