

## Product datasheet for **TA383294**

### **BUD23 Rabbit Polyclonal Antibody**

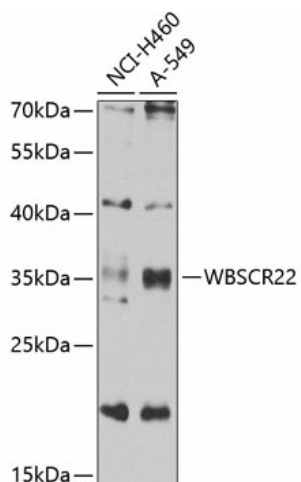
#### **Product data:**

<b>Product Type:</b>	Primary Antibodies
<b>Applications:</b>	ICC/IF, WB
<b>Recommended Dilution:</b>	WB,1:500 - 1:2000 IF,1:50 - 1:100
<b>Reactivity:</b>	Human, Rat
<b>Modifications:</b>	Unmodified
<b>Host:</b>	Rabbit
<b>Isotype:</b>	IgG
<b>Clonality:</b>	Polyclonal
<b>Immunogen:</b>	Recombinant fusion protein containing a sequence corresponding to amino acids 1-281 of human WBSCR22 (NP_059998.2).
<b>Formulation:</b>	Buffer: PBS with 0.02% sodium azide,50% glycerol,pH7.3.
<b>Concentration:</b>	lot specific
<b>Purification:</b>	Affinity purification
<b>Conjugation:</b>	Unconjugated
<b>Storage:</b>	Store at -20°C. Avoid freeze / thaw cycles.
<b>Stability:</b>	Shelf life: one year from despatch.
<b>Predicted Protein Size:</b>	24kDa/31kDa/33kDa
<b>Gene Name:</b>	Williams-Beuren syndrome chromosome region 22
<b>Database Link:</b>	<a href="#">Entrez Gene 114049 Human</a> <a href="#">O43709</a>
<b>Background:</b>	This gene encodes a protein containing a nuclear localization signal and an S-adenosyl-L-methionine binding motif typical of methyltransferases, suggesting that the encoded protein may act on DNA methylation. This gene is deleted in Williams syndrome, a multisystem developmental disorder caused by the deletion of contiguous genes at 7q11.23. Alternatively spliced transcript variants have been found.
<b>Synonyms:</b>	HASJ4442; HUSSY-3; MGC2022; MGC5140; MGC19709; PP3381; WBMT

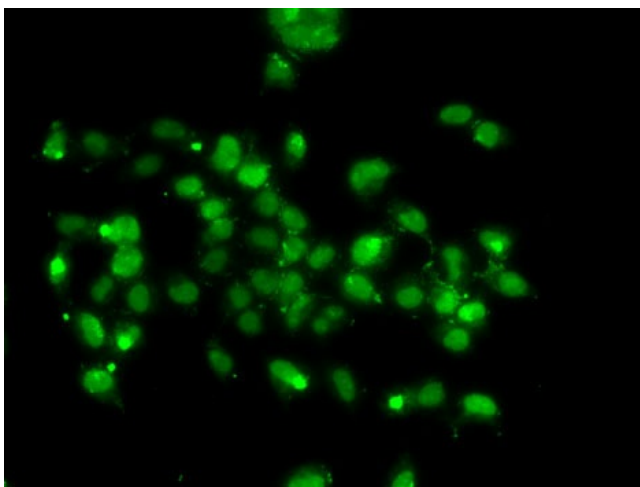


[View online »](#)

## Product images:



Western blot analysis of extracts of various cell lines, using WBSCR22 antibody (TA383294) at 1:1000 dilution. | Secondary antibody: HRP Goat Anti-Rabbit IgG (H+L) at 1:10000 dilution. | Lysates/proteins: 25ug per lane. | Blocking buffer: 3% nonfat dry milk in TBST. | Detection: ECL Basic Kit. | Exposure time: 30s.



Immunofluorescence analysis of A-549 cells using WBSCR22 antibody (TA383294).