

## Product datasheet for **TA383290S**

### WBP11 Rabbit Polyclonal Antibody

#### Product data:

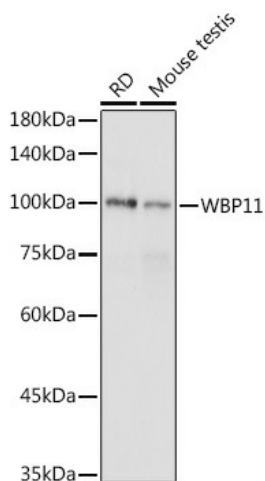
Product Type:	Primary Antibodies
Applications:	ICC/IF, IHC, WB
Recommended Dilution:	WB,1:500 - 1:2000 IHC,1:50 - 1:200 IF,1:50 - 1:200
Reactivity:	Human, Mouse, Rat
Modifications:	Unmodified
Host:	Rabbit
Isotype:	IgG
Clonality:	Polyclonal
Immunogen:	Recombinant fusion protein containing a sequence corresponding to amino acids 1-140 of human WBP11 (NP_057396.1).
Formulation:	Buffer: PBS with 0.02% sodium azide,50% glycerol,pH7.3.
Concentration:	lot specific
Purification:	Affinity purification
Conjugation:	Unconjugated
Storage:	Store at -20°C. Avoid freeze / thaw cycles.
Stability:	Shelf life: one year from despatch.
Predicted Protein Size:	69kDa
Gene Name:	WW domain binding protein 11
Database Link:	<a href="#">Entrez Gene 51729 Human Q9Y2W2</a>
Background:	This gene encodes a nuclear protein, which colocalizes with mRNA splicing factors and intermediate filament-containing perinuclear networks. This protein has 95% amino acid sequence identity to the mouse Wbp11 protein. It contains two proline-rich regions that bind to the WW domain of Npw38, a nuclear protein, and thus this protein is also called Npw38-binding protein NpwBP. The Npw38-NpwBP complex may function as a component of an mRNA factory in the nucleus.



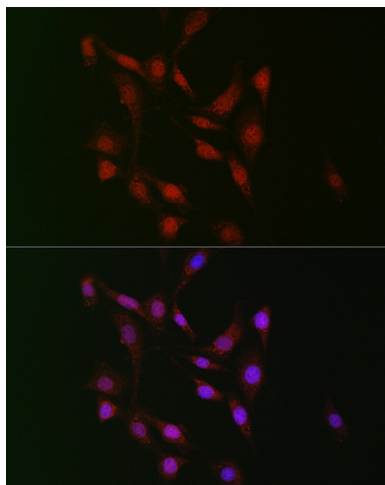
[View online »](#)

Synonyms: DKFZp779M1063; NPWBP; SIPP1; SNP70; WBP-11

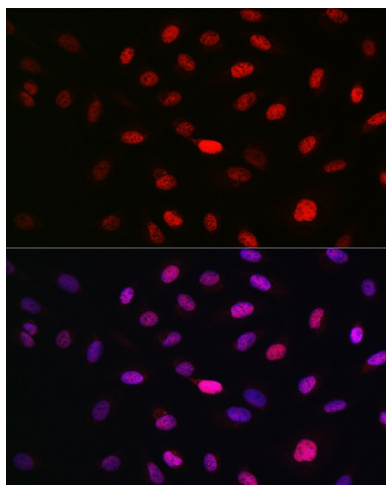
### Product images:



Western blot analysis of extracts of various cell lines, using WBP11 antibody (TA383290) at 1:1000 dilution. | Secondary antibody: HRP Goat Anti-Rabbit IgG (H+L) at 1:10000 dilution. | Lysates/proteins: 25ug per lane. | Blocking buffer: 3% nonfat dry milk in TBST. | Detection: ECL Basic Kit . | Exposure time: 1s.



Immunofluorescence analysis of NIH/3T3 cells using WBP11 Rabbit pAb (TA383290) at dilution of 1:100 (40x lens). Blue: DAPI for nuclear staining.



Immunofluorescence analysis of U2OS cells using WBP11 Rabbit pAb ([TA383290]) at dilution of 1:100 (40x lens). Blue: DAPI for nuclear staining.