

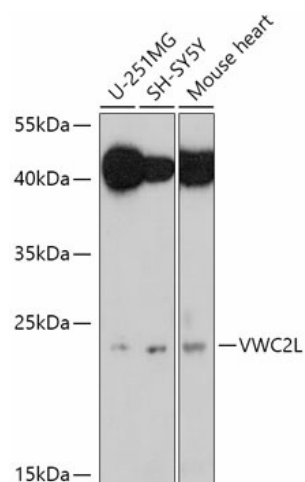
Product datasheet for **TA383283S**

Vwc2l Rabbit Polyclonal Antibody

Product data:

Product Type:	Primary Antibodies
Applications:	ELISA, WB
Recommended Dilution:	WB, 1:500 - 1:2000 ELISA, Recommended starting concentration is 1 µg/mL. Please optimize the concentration based on your specific assay requirements.
Reactivity:	Human, Mouse
Modifications:	Unmodified
Host:	Rabbit
Isotype:	IgG
Clonality:	Polyclonal
Formulation:	Buffer: PBS with 0.02% sodium azide, 50% glycerol, pH 7.3.
Concentration:	lot specific
Purification:	Affinity purification
Conjugation:	Unconjugated
Storage:	Store at -20°C. Avoid freeze / thaw cycles.
Stability:	Shelf life: one year from despatch.
Gene Name:	von Willebrand factor C domain-containing protein 2-like
Database Link:	Entrez Gene 320460 Mouse Q505H4
Background:	Acts upstream of or within negative regulation of BMP signaling pathway and positive regulation of neuron differentiation. Located in extracellular space. Part of AMPA glutamate receptor complex. Is expressed in brain; central nervous system; hippocampus; hypothalamus; and thalamus. Orthologous to human VWC2L (von Willebrand factor C domain containing 2 like).
Synonyms:	A830006F12Rik; Brl; RGD1565501

[View online »](#)

Product images:

Western blot analysis of various lysates using VWC2L Rabbit pAb ([TA383283]) at 1:1000 dilution.

Secondary antibody: HRP-conjugated Goat anti-Rabbit IgG (H+L) (AS014) at 1:10000 dilution.

Lysates/proteins: 25µg per lane.

Blocking buffer: 3% nonfat dry milk in TBST.

Detection: ECL Basic Kit (RM00020).

Exposure time: 90s.