

Product datasheet for **TA383265**

VPS39 Rabbit Polyclonal Antibody

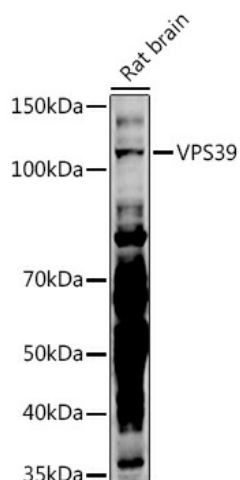
Product data:

Product Type:	Primary Antibodies
Applications:	ELISA, ICC/IF, WB
Recommended Dilution:	WB, 1:100 - 1:500 IF/ICC, 1:50 - 1:200 ELISA, Recommended starting concentration is 1 µg/mL. Please optimize the concentration based on your specific assay requirements.
Reactivity:	Human, Mouse, Rat
Modifications:	Unmodified
Host:	Rabbit
Isotype:	IgG
Clonality:	Polyclonal
Formulation:	Buffer: PBS with 0.01% thimerosal, 50% glycerol, pH 7.3.
Concentration:	lot specific
Purification:	Affinity purification
Conjugation:	Unconjugated
Storage:	Store at -20°C. Avoid freeze / thaw cycles.
Stability:	Shelf life: one year from despatch.
Predicted Protein Size:	102kDa
Gene Name:	VPS39, HOPS complex subunit
Database Link:	Entrez Gene 23339 Human Q96JC1
Background:	This gene encodes a protein that may promote clustering and fusion of late endosomes and lysosomes. The protein may also act as an adaptor protein that modulates the transforming growth factor-beta response by coupling the transforming growth factor-beta receptor complex to the Smad pathway. Alternative splicing results in multiple transcript variants.
Synonyms:	FLJ21681; FLJ46546; hVam6p; KIAA0770; TLP; VAM6; Vam6/Vps39-like



[View online »](#)

Product images:



Western blot analysis of lysates from Rat brain