

## Product datasheet for **TA383261S**

### VPS36 Rabbit Polyclonal Antibody

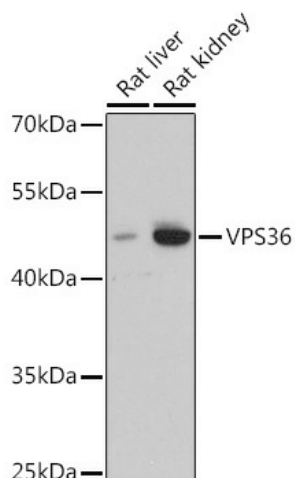
#### Product data:

Product Type:	Primary Antibodies
Applications:	ICC/IF, WB
Recommended Dilution:	WB,1:500 - 1:2000 IF,1:50 - 1:200
Reactivity:	Human, Mouse, Rat
Modifications:	Unmodified
Host:	Rabbit
Isotype:	IgG
Clonality:	Polyclonal
Immunogen:	Recombinant fusion protein containing a sequence corresponding to amino acids 70-220 of human VPS36 (NP_057159.2).
Formulation:	Buffer: PBS with 0.02% sodium azide,50% glycerol,pH7.3.
Concentration:	lot specific
Purification:	Affinity purification
Conjugation:	Unconjugated
Storage:	Store at -20°C. Avoid freeze / thaw cycles.
Stability:	Shelf life: one year from despatch.
Predicted Protein Size:	36kDa/43kDa
Gene Name:	vacuolar protein sorting 36 homolog
Database Link:	<a href="#">Entrez Gene 51028 Human Q86VN1</a>
Background:	This gene encodes a protein that is a subunit of the endosomal sorting complex required for transport II (ESCRT-II). This protein complex functions in sorting of ubiquitinated membrane proteins during endocytosis. A similar protein complex in rat is associated with RNA polymerase elongation factor II.
Synonyms:	C13orf9; CGI-145; DKFZp781E0871; EAP45

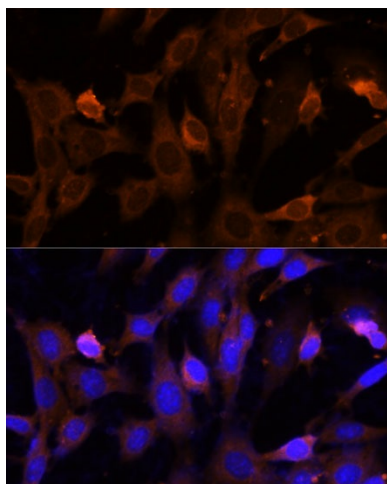


[View online »](#)

## Product images:



Western blot analysis of extracts of various cell lines, using VPS36 antibody ([TA383261]) at 1:3000 dilution. | Secondary antibody: HRP Goat Anti-Rabbit IgG (H+L) at 1:10000 dilution. | Lysates/proteins: 25ug per lane. | Blocking buffer: 3% nonfat dry milk in TBST. | Detection: ECL Basic Kit . | Exposure time: 90s.



Immunofluorescence analysis of NIH-3T3 cells using VPS36 Polyclonal Antibody ([TA383261]) at dilution of 1:100 (40x lens). Blue: DAPI for nuclear staining.