

## Product datasheet for **TA383249S**

### **TMEM49 (VMP1) Rabbit Polyclonal Antibody**

#### **Product data:**

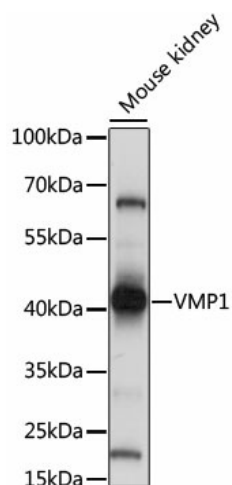
<b>Product Type:</b>	Primary Antibodies
<b>Applications:</b>	ICC/IF, WB
<b>Recommended Dilution:</b>	WB, 1:200 - 1:2000 IF, 1:50 - 1:200
<b>Reactivity:</b>	Human, Mouse, Rat
<b>Modifications:</b>	Unmodified
<b>Host:</b>	Rabbit
<b>Isotype:</b>	IgG
<b>Clonality:</b>	Polyclonal
<b>Immunogen:</b>	A synthetic peptide corresponding to a sequence within amino acids 300 to the C-terminus of human VMP1 (NP_112200.2).
<b>Formulation:</b>	Buffer: PBS with 0.02% sodium azide, 50% glycerol, pH 7.3.
<b>Concentration:</b>	lot specific
<b>Purification:</b>	Affinity purification
<b>Conjugation:</b>	Unconjugated
<b>Storage:</b>	Store at -20°C. Avoid freeze / thaw cycles.
<b>Stability:</b>	Shelf life: one year from despatch.
<b>Predicted Protein Size:</b>	24kDa/46kDa
<b>Gene Name:</b>	vacuole membrane protein 1
<b>Database Link:</b>	<a href="#">Entrez Gene 81671 Human Q96GC9</a>
<b>Background:</b>	This gene encodes a transmembrane protein that plays a key regulatory role in the process of autophagy. The ectopic overexpression of the encoded protein in cultured cells triggers autophagy even under nutrient-rich conditions. This gene is overexpressed in pancreatitis affected acinar cells where the encoded protein mediates sequestration and degradation of potentially deleterious activated zymogen granules in a process termed, zymophagy. [provided by RefSeq, Jul 2016]



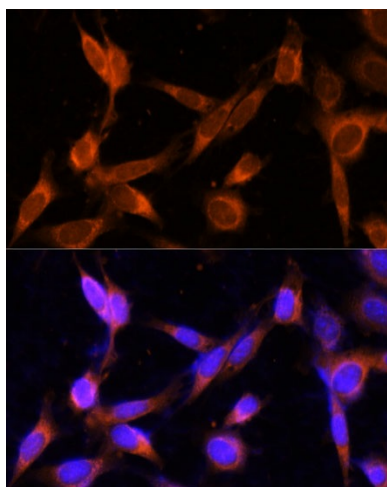
[View online »](#)

Synonyms: EPG3; TANGO5; TMEM49

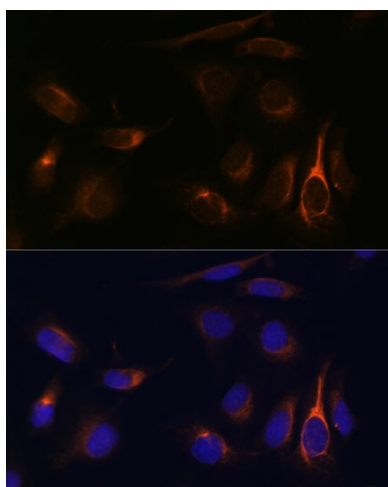
### Product images:



Western blot analysis of extracts of mouse kidney, using VMP1 antibody ([TA383249]) at 1:1000 dilution. | Secondary antibody: HRP Goat Anti-Rabbit IgG (H+L) at 1:10000 dilution. | Lysates/proteins: 25ug per lane. | Blocking buffer: 3% nonfat dry milk in TBST. | Detection: ECL Basic Kit . | Exposure time: 5s.



Immunofluorescence analysis of NIH-3T3 cells using VMP1 Polyclonal Antibody ([TA383249]) at dilution of 1:100 (40x lens). Blue: DAPI for nuclear staining.



Immunofluorescence analysis of U-2 OS cells using VMP1 Polyclonal Antibody ([TA383249]) at dilution of 1:100 (40x lens). Blue: DAPI for nuclear staining.