

Product datasheet for **TA383249**

TMEM49 (VMP1) Rabbit Polyclonal Antibody

Product data:

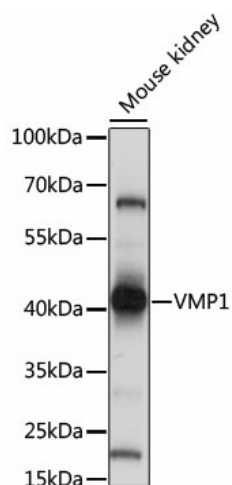
Product Type:	Primary Antibodies
Applications:	ICC/IF, WB
Recommended Dilution:	WB,1:200 - 1:2000 IF,1:50 - 1:200
Reactivity:	Human, Mouse, Rat
Modifications:	Unmodified
Host:	Rabbit
Isotype:	IgG
Clonality:	Polyclonal
Immunogen:	A synthetic peptide corresponding to a sequence within amino acids 300 to the C-terminus of human VMP1 (NP_112200.2).
Formulation:	Buffer: PBS with 0.02% sodium azide,50% glycerol,pH7.3.
Concentration:	lot specific
Purification:	Affinity purification
Conjugation:	Unconjugated
Storage:	Store at -20°C. Avoid freeze / thaw cycles.
Stability:	Shelf life: one year from despatch.
Predicted Protein Size:	24kDa/46kDa
Gene Name:	vacuole membrane protein 1
Database Link:	Entrez Gene 81671 Human Q96GC9
Background:	This gene encodes a transmembrane protein that plays a key regulatory role in the process of autophagy. The ectopic overexpression of the encoded protein in cultured cells triggers autophagy even under nutrient-rich conditions. This gene is overexpressed in pancreatitis affected acinar cells where the encoded protein mediates sequestration and degradation of potentially deleterious activated zymogen granules in a process termed, zymophagy. [provided by RefSeq, Jul 2016]



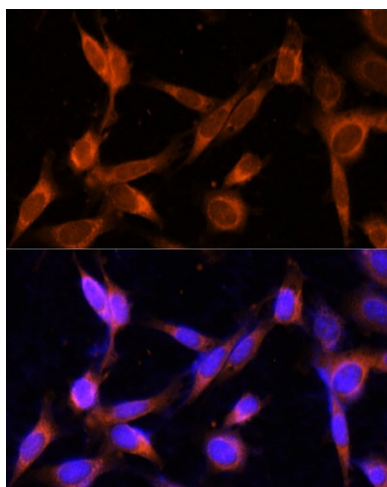
[View online »](#)

Synonyms: EPG3; TANGO5; TMEM49

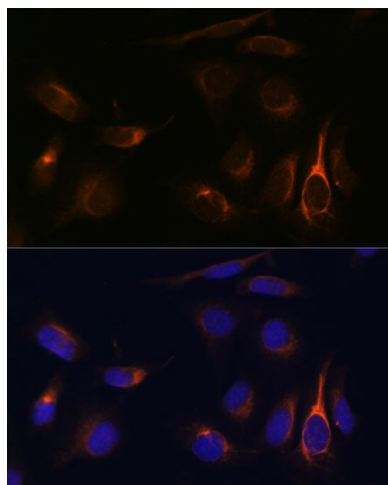
Product images:



Western blot analysis of extracts of mouse kidney, using VMP1 antibody (TA383249) at 1:1000 dilution. | Secondary antibody: HRP Goat Anti-Rabbit IgG (H+L) at 1:10000 dilution. | Lysates/proteins: 25ug per lane. | Blocking buffer: 3% nonfat dry milk in TBST. | Detection: ECL Basic Kit. | Exposure time: 5s.



Immunofluorescence analysis of NIH-3T3 cells using VMP1 Polyclonal Antibody (TA383249) at dilution of 1:100 (40x lens). Blue: DAPI for nuclear staining.



Immunofluorescence analysis of U-2 OS cells using VMP1 Polyclonal Antibody (TA383249) at dilution of 1:100 (40x lens). Blue: DAPI for nuclear staining.