

Product datasheet for **TA383212**

VDAC3 Rabbit Polyclonal Antibody

Product data:

Product Type:	Primary Antibodies
Applications:	ICC/IF, IHC, WB
Recommended Dilution:	WB,1:1000 - 1:2000 IHC,1:50 - 1:200 IF,1:50 - 1:200
Reactivity:	Human, Mouse
Modifications:	Unmodified
Host:	Rabbit
Isotype:	IgG
Clonality:	Polyclonal
Immunogen:	Recombinant fusion protein containing a sequence corresponding to amino acids 1-283 of human VDAC3 (NP_005653.3).
Formulation:	Buffer: PBS with 0.02% sodium azide,50% glycerol,pH7.3.
Concentration:	lot specific
Purification:	Affinity purification
Conjugation:	Unconjugated
Storage:	Store at -20°C. Avoid freeze / thaw cycles.
Stability:	Shelf life: one year from despatch.
Predicted Protein Size:	30kDa
Gene Name:	voltage dependent anion channel 3
Database Link:	Entrez Gene 7419 Human Q9Y277



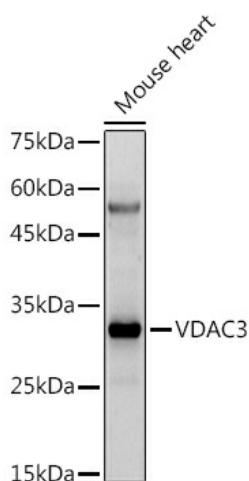
[View online »](#)

Background:

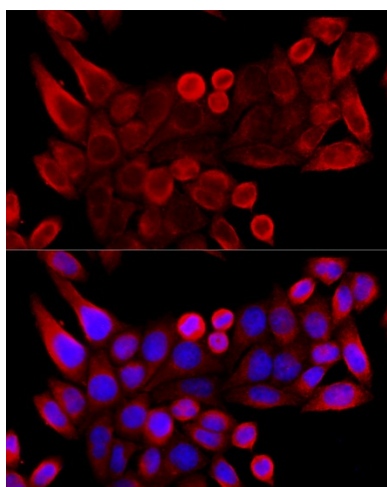
This gene encodes a voltage-dependent anion channel (VDAC), and belongs to the mitochondrial porin family. VDACS are small, integral membrane proteins that traverse the outer mitochondrial membrane and conduct ATP and other small metabolites. They are known to bind several kinases of intermediary metabolism, thought to be involved in translocation of adenine nucleotides, and are hypothesized to form part of the mitochondrial permeability transition pore, which results in the release of cytochrome c at the onset of apoptotic cell death. Alternatively transcript variants encoding different isoforms have been described for this gene.

Synonyms:

HD-VDAC3; hVDAC3; VDAC-3

Product images:

Western blot analysis of extracts of Mouse heart, using VDAC3 antibody (TA383212) at 1:500 dilution. | Secondary antibody: HRP Goat Anti-Rabbit IgG (H+L) at 1:10000 dilution. | Lysates/proteins: 25ug per lane. | Blocking buffer: 3% nonfat dry milk in TBST. | Detection: ECL Enhanced Kit. | Exposure time: 180s.



Immunofluorescence analysis of HeLa cells using VDAC3 antibody (TA383212) at dilution of 1:100 (40x lens). Blue: DAPI for nuclear staining.