

## Product datasheet for **TA383181**

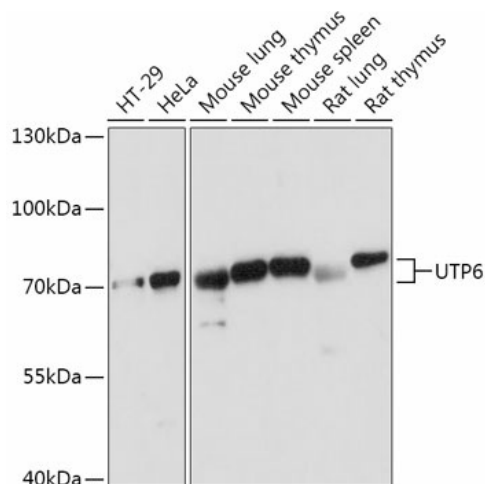
### UTP6 Rabbit Polyclonal Antibody

#### Product data:

|                         |                                                                                                                                                                                                         |
|-------------------------|---------------------------------------------------------------------------------------------------------------------------------------------------------------------------------------------------------|
| Product Type:           | Primary Antibodies                                                                                                                                                                                      |
| Applications:           | ELISA, WB                                                                                                                                                                                               |
| Recommended Dilution:   | WB, 1:500 - 1:2000<br>ELISA, Recommended starting concentration is 1 µg/mL. Please optimize the concentration based on your specific assay requirements.                                                |
| Reactivity:             | Human, Mouse, Rat                                                                                                                                                                                       |
| Modifications:          | Unmodified                                                                                                                                                                                              |
| Host:                   | Rabbit                                                                                                                                                                                                  |
| Isotype:                | IgG                                                                                                                                                                                                     |
| Clonality:              | Polyclonal                                                                                                                                                                                              |
| Formulation:            | Buffer: PBS with 0.01% thimerosal, 50% glycerol, pH7.3.                                                                                                                                                 |
| Concentration:          | lot specific                                                                                                                                                                                            |
| Purification:           | Affinity purification                                                                                                                                                                                   |
| Conjugation:            | Unconjugated                                                                                                                                                                                            |
| Storage:                | Store at -20°C. Avoid freeze / thaw cycles.                                                                                                                                                             |
| Stability:              | Shelf life: one year from despatch.                                                                                                                                                                     |
| Predicted Protein Size: | 70kDa                                                                                                                                                                                                   |
| Gene Name:              | UTP6, small subunit processome component                                                                                                                                                                |
| Database Link:          | <a href="#">Entrez Gene 55813 Human</a><br><a href="#">Q9NYH9</a>                                                                                                                                       |
| Background:             | Predicted to enable snoRNA binding activity. Predicted to be involved in maturation of SSU-rRNA from tricistronic rRNA transcript (SSU-rRNA, 5.8S rRNA, LSU-rRNA). Located in chromosome and nucleolus. |
| Synonyms:               | C17orf40; HCA66; MHAT                                                                                                                                                                                   |



[View online »](#)

**Product images:**


Western blot analysis of various lysates using UTP6 Rabbit pAb (TA383181) at 1:1000 dilution. Secondary antibody: HRP-conjugated Goat anti-Rabbit IgG (H+L) at 1:10000 dilution. Lysates/proteins: 25µg per lane. Blocking buffer: 3% nonfat dry milk in TBST. Detection: ECL Basic Kit . Exposure time: 5s.