

Product datasheet for **TA383160S**

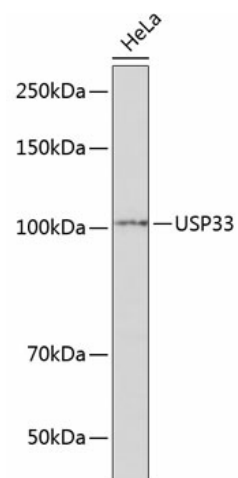
USP33 Rabbit Polyclonal Antibody

Product data:

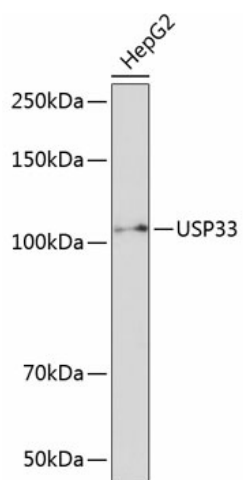
Product Type:	Primary Antibodies
Applications:	ELISA, ICC/IF, IHC, WB
Recommended Dilution:	WB, 1:500 - 1:2000 IHC-P, 1:50 - 1:200 IF/ICC, 1:50 - 1:100 ELISA, Recommended starting concentration is 1 µg/mL. Please optimize the concentration based on your specific assay requirements.
Reactivity:	Human, Mouse, Rat
Modifications:	Unmodified
Host:	Rabbit
Isotype:	IgG
Clonality:	Polyclonal
Formulation:	Buffer: PBS with 0.02% sodium azide, 50% glycerol, pH7.3.
Concentration:	lot specific
Purification:	Affinity purification
Conjugation:	Unconjugated
Storage:	Store at -20°C. Avoid freeze / thaw cycles.
Stability:	Shelf life: one year from despatch.
Predicted Protein Size:	107kDa
Gene Name:	ubiquitin specific peptidase 33
Database Link:	Entrez Gene 23032 Human Q8TEY7
Background:	This gene encodes a deubiquinating enzyme important in a variety of processes, including Slit-dependent cell migration and beta-2 adrenergic receptor signaling. The protein is negatively regulated through ubiquitination by von Hippel-Lindau tumor protein (VHL). Alternative splicing results in multiple transcript variants and protein isoforms.
Synonyms:	hVDU1; KIAA1097; MGC16868; OTTHUMP00000011330; VDU1


[View online »](#)

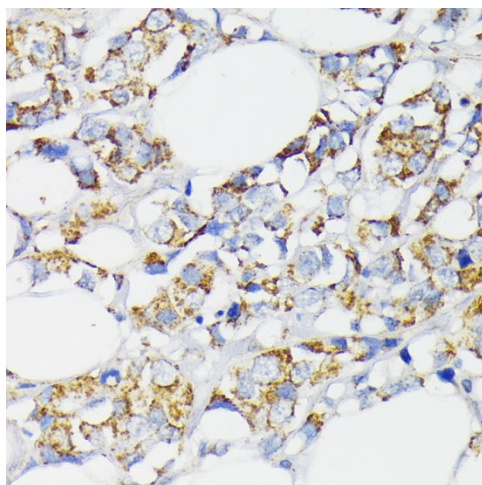
Product images:



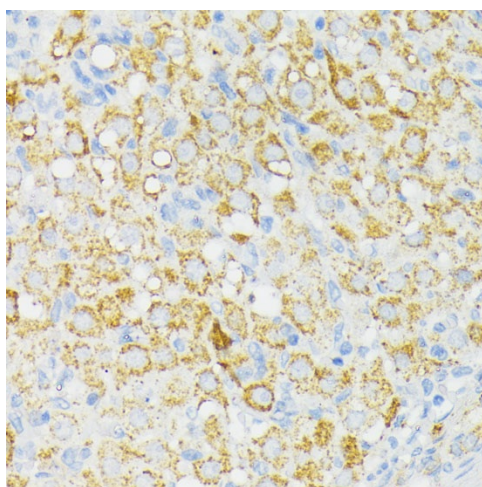
Western blot analysis of lysates from HeLa cells



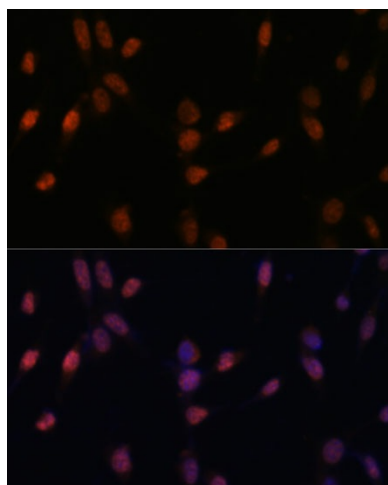
Western blot analysis of lysates from HepG2 cells



Immunohistochemistry analysis of paraffin-embedded Human breast cancer using USP33 Rabbit pAb ([TA383160]) at dilution of 1:100 (40x lens). Microwave antigen retrieval performed with 0.01M PBS Buffer (pH 7.2) prior to IHC staining.



Immunohistochemistry analysis of paraffin-embedded Rat ovary using USP33 Rabbit pAb ([TA383160]) at dilution of 1:100 (40x lens). Microwave antigen retrieval performed with 0.01M PBS Buffer (pH 7.2) prior to IHC staining.



Immunofluorescence analysis of NIH-3T3 cells using USP33 Rabbit pAb ([TA383160]) at dilution of 1:100 (40x lens). Secondary antibody: Cy3-conjugated Goat anti-Rabbit IgG (H+L) (AS007) at 1:500 dilution. Blue: DAPI for nuclear staining.