

Product datasheet for **TA383143S**

USP12 Rabbit Polyclonal Antibody

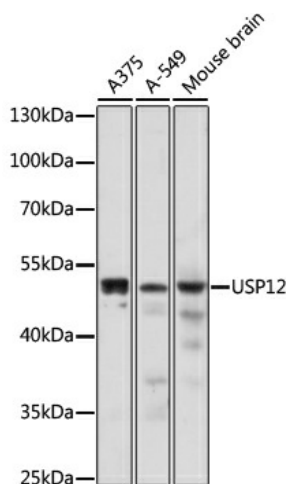
Product data:

| | |
|-------------------------|---|
| Product Type: | Primary Antibodies |
| Applications: | ELISA, WB |
| Recommended Dilution: | WB, 1:500 - 1:1000 ELISA, Recommended starting concentration is 1 µg/mL. Please optimize the concentration based on your specific assay requirements. |
| Reactivity: | Human, Mouse, Rat |
| Modifications: | Unmodified |
| Host: | Rabbit |
| Isotype: | IgG |
| Clonality: | Polyclonal |
| Formulation: | Buffer: PBS with 0.02% sodium azide, 50% glycerol, pH 7.3. |
| Concentration: | lot specific |
| Purification: | Affinity purification |
| Conjugation: | Unconjugated |
| Storage: | Store at -20°C. Avoid freeze / thaw cycles. |
| Stability: | Shelf life: one year from despatch. |
| Predicted Protein Size: | 43kDa |
| Gene Name: | ubiquitin specific peptidase 12 |
| Database Link: | Entrez Gene 219333 Human Q75317 |
| Background: | Enables cysteine-type endopeptidase activity and thiol-dependent deubiquitinase. Involved in protein deubiquitination. Predicted to be located in nucleoplasm. Predicted to be active in cytosol and nucleus. |
| Synonyms: | UBH1; USP12L1 |



[View online »](#)

Product images:



Western blot analysis of various lysates using USP12 Rabbit pAb (TA383143) at 1:1000 dilution. Secondary antibody: HRP-conjugated Goat anti-Rabbit IgG (H+L) (AS014) at 1:10000 dilution. Lysates/proteins: 25µg per lane. Blocking buffer: 3% nonfat dry milk in TBST. Detection: ECL Enhanced Kit (RM00021). Exposure time: 2min.