

## Product datasheet for **TA383143**

### USP12 Rabbit Polyclonal Antibody

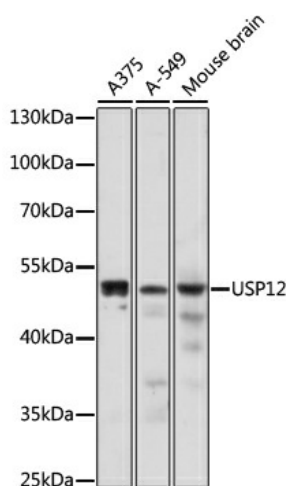
#### Product data:

Product Type:	Primary Antibodies
Applications:	WB
Recommended Dilution:	WB,1:500 - 1:1000
Reactivity:	Human, Mouse, Rat
Modifications:	Unmodified
Host:	Rabbit
Isotype:	IgG
Clonality:	Polyclonal
Immunogen:	A synthetic Peptide of human USP12.
Formulation:	Buffer: PBS with 0.02% sodium azide,50% glycerol,pH7.3.
Concentration:	lot specific
Purification:	Affinity purification
Conjugation:	Unconjugated
Storage:	Store at -20°C. Avoid freeze / thaw cycles.
Stability:	Shelf life: one year from despatch.
Predicted Protein Size:	42kDa
Gene Name:	ubiquitin specific peptidase 12
Database Link:	<a href="#">Entrez Gene 219333 Human O75317</a>
Background:	Deubiquitinating enzyme. Has almost no deubiquitinating activity by itself and requires the interaction with WDR20 and WDR48 to have a high activity. Not involved in deubiquitination of monoubiquitinated FANCD2. In complex with WDR48, acts as a potential tumor suppressor by positively regulating PHLPP1 stability.
Synonyms:	UBH1; USP12L1



[View online »](#)

## Product images:



Western blot analysis of extracts of various cell lines, using USP12 antibody (TA383143) at 1:1000 dilution. | Secondary antibody: HRP Goat Anti-Rabbit IgG (H+L) at 1:10000 dilution. | Lysates/proteins: 25ug per lane. | Blocking buffer: 3% nonfat dry milk in TBST. | Detection: ECL Enhanced Kit. | Exposure time: 2min.