

Product datasheet for **TA383138S**

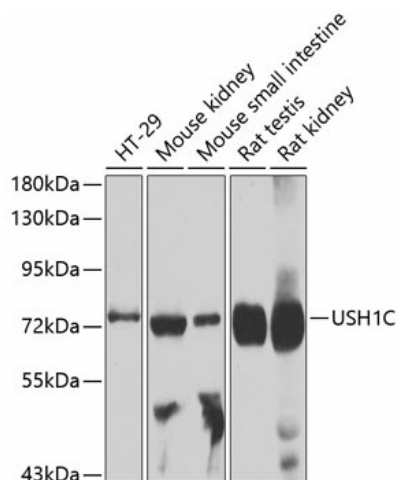
ush1c Rabbit Polyclonal Antibody

Product data:

Product Type:	Primary Antibodies
Applications:	ELISA, WB
Recommended Dilution:	WB, 1:200 - 1:2000 ELISA, Recommended starting concentration is 1 µg/mL. Please optimize the concentration based on your specific assay requirements.
Reactivity:	Human, Mouse, Rat
Modifications:	Unmodified
Host:	Rabbit
Isotype:	IgG
Clonality:	Polyclonal
Formulation:	Buffer: PBS with 0.02% sodium azide, 50% glycerol, pH 7.3.
Concentration:	lot specific
Purification:	Affinity purification
Conjugation:	Unconjugated
Storage:	Store at -20°C. Avoid freeze / thaw cycles.
Stability:	Shelf life: one year from despatch.
Predicted Protein Size:	45kDa/58kDa/60kDa/62kDa/101kDa
Gene Name:	Usher syndrome 1C
Background:	Predicted to enable actin filament binding activity. Acts upstream of or within neuron development; startle response; and synapse organization. Predicted to be part of stereocilia ankle link complex. Predicted to be active in several cellular components, including cilium; photoreceptor inner segment; and stereocilium tip. Is expressed in brain; hair cell; pleuroperitoneal region; sensory system; and trunk musculature. Used to study Usher syndrome. Human ortholog(s) of this gene implicated in Usher syndrome; Usher syndrome type 1; Usher syndrome type 1C; and autosomal recessive nonsyndromic deafness 18A. Orthologous to human USH1C (USH1 protein network component harmonin).
Synonyms:	AIE-75; AIE75; DFNB18; harmonin; NY-CO-37; NY-CO-38; PDZ-45; PDZ-73; PDZ73; ush1cpst



[View online »](#)

Product images:

Western blot analysis of various lysates using USH1C Rabbit pAb (TA383138S) at 1:1000 dilution.

Secondary antibody: HRP-conjugated Goat anti-Rabbit IgG (H+L) (AS014) at 1:10000 dilution.

Lysates/proteins: 25µg per lane.

Blocking buffer: 3% nonfat dry milk in TBST.

Detection: ECL Basic Kit (RM00020).

Exposure time: 90s.