

## Product datasheet for **TA383134**

### USE1 Rabbit Polyclonal Antibody

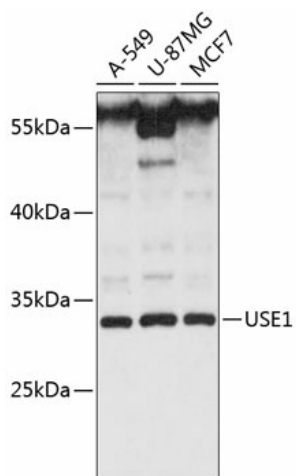
#### Product data:

Product Type:	Primary Antibodies
Applications:	IF, WB
Recommended Dilution:	WB,1:1000 - 1:2000 IF,1:50 - 1:200
Reactivity:	Human, Mouse
Modifications:	Unmodified
Host:	Rabbit
Isotype:	IgG
Clonality:	Polyclonal
Immunogen:	Recombinant fusion protein containing a sequence corresponding to amino acids 1-259 of human USE1 (NP_060937.1).
Formulation:	Buffer: PBS with 0.02% sodium azide,50% glycerol,pH7.3.
Concentration:	lot specific
Purification:	Affinity purification
Conjugation:	Unconjugated
Storage:	Store at -20°C. Avoid freeze / thaw cycles.
Stability:	Shelf life: one year from despatch.
Predicted Protein Size:	15kDa/16kDa/29kDa
Gene Name:	unconventional SNARE in the ER 1
Database Link:	<a href="#">Entrez Gene 55850 Human Q9NZ43</a>
Background:	SNARE that may be involved in targeting and fusion of Golgi-derived retrograde transport vesicles with the ER.
Synonyms:	MDS032; p31; Q-SNARE; SLT1; USE1L



[View online »](#)

## Product images:



Western blot analysis of extracts of various cell lines, using USE1 antibody (TA383134) at 1:3000 dilution. | Secondary antibody: HRP Goat Anti-Rabbit IgG (H+L) at 1:10000 dilution. | Lysates/proteins: 25ug per lane. | Blocking buffer: 3% nonfat dry milk in TBST. | Detection: ECL Basic Kit . | Exposure time: 30s.