

## Product datasheet for **TA383089**

### ULBP1 Rabbit Polyclonal Antibody

#### Product data:

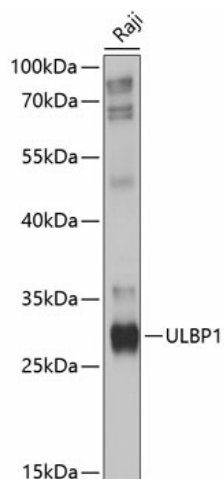
Product Type:	Primary Antibodies
Applications:	IHC, WB
Recommended Dilution:	WB,1:1000 - 1:2000 IHC,1:50 - 1:200
Reactivity:	Human, Mouse
Modifications:	Unmodified
Host:	Rabbit
Isotype:	IgG
Clonality:	Polyclonal
Immunogen:	Recombinant fusion protein containing a sequence corresponding to amino acids 26-216 of human ULBP1 (NP_079494.1).
Formulation:	Buffer: PBS with 0.02% sodium azide,50% glycerol,pH7.3.
Concentration:	lot specific
Purification:	Affinity purification
Conjugation:	Unconjugated
Storage:	Store at -20°C. Avoid freeze / thaw cycles.
Stability:	Shelf life: one year from despatch.
Predicted Protein Size:	27kDa
Gene Name:	UL16 binding protein 1
Database Link:	<a href="#">Entrez Gene 80329 Human Q9BZM6</a>
Background:	The protein encoded by this gene is a ligand of natural killer group 2, member D (NKG2D), an immune system-activating receptor on NK cells and T-cells. Binding of the encoded ligand to NKG2D leads to activation of several signal transduction pathways, including those of JAK2, STAT5, ERK and PI3K kinase/Akt. Also, in cytomegalovirus-infected cells, this ligand binds the UL16 glycoprotein and is prevented from activating the immune system. Three transcript variants encoding different isoforms have been found for this gene.



[View online »](#)

Synonyms: ALCAN-beta; N2DL-1; N2DL1; NKG2DL1; OTTHUMP00000017410; RAET1I

### Product images:



Western blot analysis of extracts of Raji cells, using ULBP1 antibody (TA383089) at 1:1000 dilution. | Secondary antibody: HRP Goat Anti-Rabbit IgG (H+L) at 1:10000 dilution. | Lysates/proteins: 25ug per lane. | Blocking buffer: 3% nonfat dry milk in TBST. | Detection: ECL Basic Kit . | Exposure time: 10s.