

Product datasheet for **TA383084**

UHRF1 Rabbit Polyclonal Antibody

Product data:

Product Type:	Primary Antibodies
Applications:	IHC, WB
Recommended Dilution:	DB, 1:500 - 1:2000 WB, 1:500 - 1:2000 IHC, 1:50 - 1:200
Reactivity:	Human, Mouse, Rat
Modifications:	DiMethyl K385
Host:	Rabbit
Isotype:	IgG
Clonality:	Polyclonal
Immunogen:	A synthetic monomethylated peptide around K385 of human UHRF1 (NP_001041666.1).
Formulation:	Buffer: PBS with 0.02% sodium azide, 50% glycerol, pH 7.3.
Concentration:	lot specific
Purification:	Affinity purification
Conjugation:	Unconjugated
Storage:	Store at -20°C. Avoid freeze / thaw cycles.
Stability:	Shelf life: one year from despatch.
Predicted Protein Size:	89kDa/91kDa
Gene Name:	ubiquitin like with PHD and ring finger domains 1
Database Link:	Entrez Gene 29128 Human Q96T88



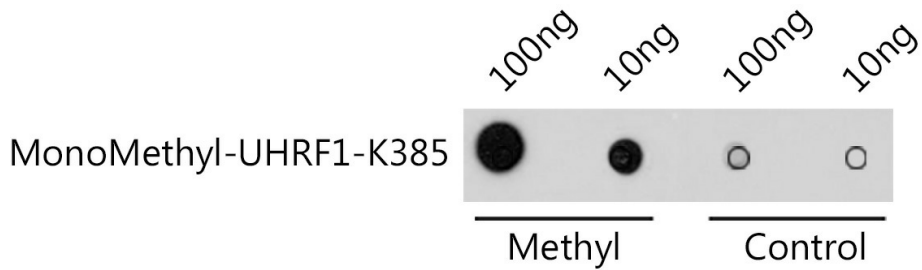
[View online »](#)

Background:

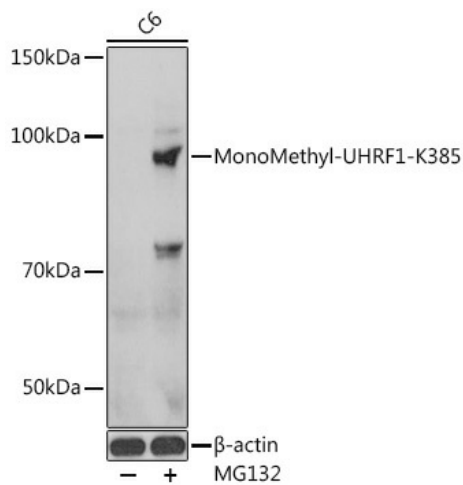
This gene encodes a member of a subfamily of RING-finger type E3 ubiquitin ligases. The protein binds to specific DNA sequences, and recruits a histone deacetylase to regulate gene expression. Its expression peaks at late G1 phase and continues during G2 and M phases of the cell cycle. It plays a major role in the G1/S transition by regulating topoisomerase IIalpha and retinoblastoma gene expression, and functions in the p53-dependent DNA damage checkpoint. It is regarded as a hub protein for the integration of epigenetic information. This gene is up-regulated in various cancers, and it is therefore considered to be a therapeutic target. Multiple transcript variants encoding different isoforms have been found for this gene. A related pseudogene exists on chromosome 12.

Synonyms:

FLJ21925; hNP95; HuNp95; ICBP90; MGC138707; Np95; RNF106

Product images:


Dot-blot analysis of all sorts of methylation peptides using MonoMethyl-UHRF1-K385 antibody (TA383084) at 1:1000 dilution.



Western blot analysis of extracts of C6 cells, using MonoMethyl-UHRF1-K385 antibody (TA383084) at 1:1000 dilution. C6 cells were treated by MG132(50 μM) at 37°C for 90 minutes. | Secondary antibody: HRP Goat Anti-Rabbit IgG (H+L) at 1:10000 dilution. | Lysates/proteins: 25ug per lane. | Blocking buffer: 3% BSA. | Detection: ECL Basic Kit . | Exposure time: 1s.