

Product datasheet for **TA383070S**

UFL1 Rabbit Polyclonal Antibody

Product data:

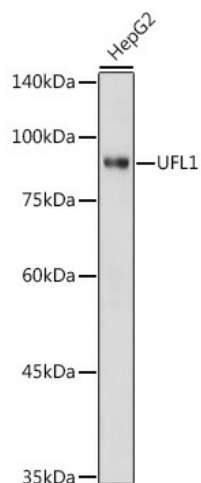
Product Type:	Primary Antibodies
Applications:	ELISA, ICC/IF, WB
Recommended Dilution:	WB,1:500 - 1:1000 IF/ICC,1:50 - 1:200 ELISA,Recommended starting concentration is 1 µg/mL. Please optimize the concentration based on your specific assay requirements.
Reactivity:	Human, Mouse, Rat
Modifications:	Unmodified
Host:	Rabbit
Isotype:	IgG
Clonality:	Polyclonal
Formulation:	Buffer: PBS with 0.02% sodium azide,50% glycerol,pH7.3.
Concentration:	lot specific
Purification:	Affinity purification
Conjugation:	Unconjugated
Storage:	Store at -20°C. Avoid freeze / thaw cycles.
Stability:	Shelf life: one year from despatch.
Predicted Protein Size:	90kDa
Gene Name:	UFM1 specific ligase 1
Database Link:	Entrez Gene 23376 Human O94874
Background:	Enables UFM1 ligase activity and protein kinase binding activity. Involved in several processes, including cellular protein modification process; regulation of signal transduction; and reticulophagy. Acts upstream of or within several processes, including positive regulation of cell population proliferation; regulation of proteasomal ubiquitin-dependent protein catabolic process; and response to endoplasmic reticulum stress. Located in endoplasmic reticulum membrane; nucleus; and site of double-strand break. Part of protein-containing complex.



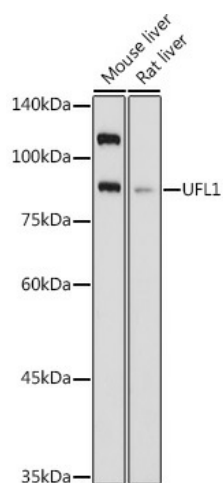
[View online »](#)

Synonyms: KIAA0776; Maxer; NLBP; RCAD; RP3-393D12.1

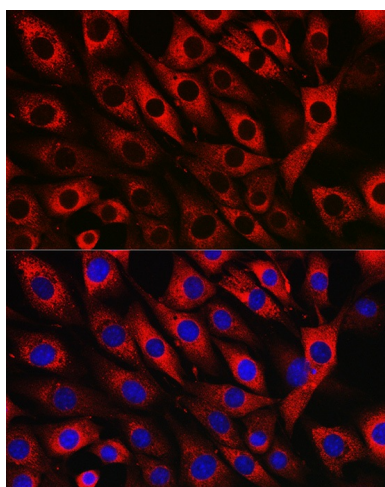
Product images:



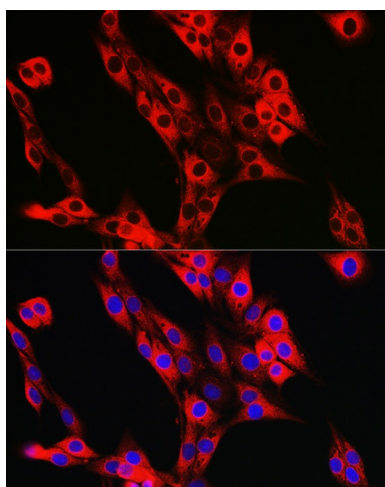
Western blot analysis of lysates from HepG2 cells



Western blot analysis of various lysates using UFL1 Rabbit pAb (TA383070) at 1:1000 dilution. Secondary antibody: HRP-conjugated Goat anti-Rabbit IgG (H+L) (AS014) at 1:10000 dilution. Lysates/proteins: 25µg per lane. Blocking buffer: 3% nonfat dry milk in TBST. Detection: ECL Basic Kit (RM00020). Exposure time: 3s.



Immunofluorescence analysis of NIH/3T3 cells using UFL1 Rabbit pAb ([TA383070]) at dilution of 1:50 (40x lens). Secondary antibody: Cy3-conjugated Goat anti-Rabbit IgG (H+L) (AS007) at 1:500 dilution. Blue: DAPI for nuclear staining.



Immunofluorescence analysis of PC-12 cells using UFL1 Rabbit pAb ([TA383070]) at dilution of 1:50 (40x lens). Secondary antibody: Cy3-conjugated Goat anti-Rabbit IgG (H+L) (AS007) at 1:500 dilution. Blue: DAPI for nuclear staining.