

## Product datasheet for **TA383070**

### UFL1 Rabbit Polyclonal Antibody

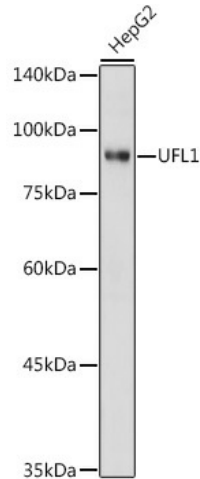
#### Product data:

|                         |   |
|-------------------------|---|
| Product Type:           | Primary Antibodies                                      |
| Applications:           | ICC/IF, WB  |
| Recommended Dilution:   | WB,1:500 - 1:2000<br>IF,1:50 - 1:200                    |
| Reactivity:             | Human, Mouse, Rat                                       |
| Modifications:          | Unmodified  |
| Host:                   | Rabbit  |
| Isotype:                | IgG   |
| Clonality:              | Polyclonal  |
| Immunogen:              | Recombinant protein of human UFL1.                      |
| Formulation:            | Buffer: PBS with 0.02% sodium azide,50% glycerol,pH7.3. |
| Concentration:          | lot specific  |
| Purification:           | Affinity purification                                   |
| Conjugation:            | Unconjugated  |
| Storage:                | Store at -20°C. Avoid freeze / thaw cycles.             |
| Stability:              | Shelf life: one year from despatch.                     |
| Predicted Protein Size: | 89kDa   |
| Gene Name:              | UFM1 specific ligase 1                                  |
| Database Link:          | <a href="#">Entrez Gene 23376 Human O94874</a>          |
| Synonyms:               | KIAA0776; Maxer; NLBP; RCAD; RP3-393D12.1               |

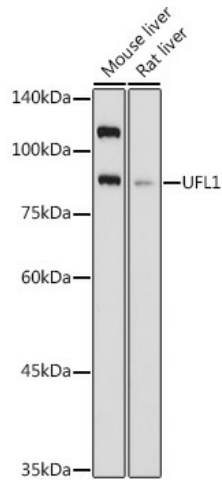


[View online »](#)

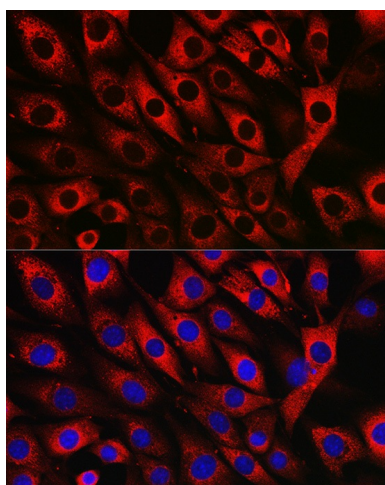
## Product images:



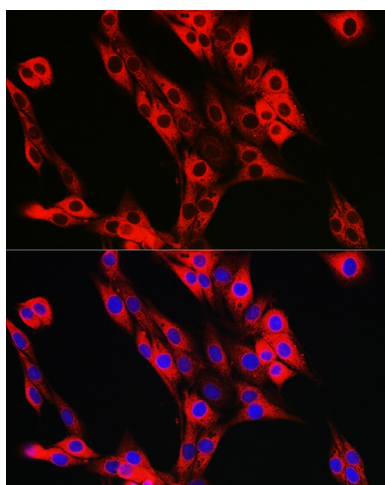
Western blot analysis of extracts of HepG2 cells, using UFL1 antibody (TA383070) at 1:1000 dilution. | Secondary antibody: HRP Goat Anti-Rabbit IgG (H+L) at 1:10000 dilution. | Lysates/proteins: 25ug per lane. | Blocking buffer: 3% nonfat dry milk in TBST. | Detection: ECL Basic Kit . | Exposure time: 1s.



Western blot analysis of extracts of various cell lines, using UFL1 antibody (TA383070) at 1:1000 dilution. | Secondary antibody: HRP Goat Anti-Rabbit IgG (H+L) at 1:10000 dilution. | Lysates/proteins: 25ug per lane. | Blocking buffer: 3% nonfat dry milk in TBST. | Detection: ECL Basic Kit . | Exposure time: 3s.



Immunofluorescence analysis of NIH/3T3 cells using UFL1 Rabbit pAb (TA383070) at dilution of 1:50 (40x lens). Blue: DAPI for nuclear staining.



Immunofluorescence analysis of PC-12 cells using UFL1 Rabbit pAb (TA383070) at dilution of 1:50 (40x lens). Blue: DAPI for nuclear staining.